



Datasheet

Vehicle Counting



Version 3.6

This Specification Sheet gives the details of system requirements, feature details and other salient points of AllGoVision's Vehicle Counting & Reporting Application.

Revision Date: March, 2015

AllGo Embedded Systems Pvt. Ltd.

2729, 80 Feet Road, HAL 3rd Stage
Indira Nagar, Bangalore-560038, India

Telephone: +91-80-4330-3100
Email: agv_contact@allgosystems.com
Website: www.allgovision.com

Contents

COPYRIGHT INFORMATION	2
INTRODUCTION	3
SYSTEM REQUIREMENT	3
INSTALLATION & ARCHITECTURE	4
Camera Installations.....	4
Integration	4
FEATURES & OPTIONS.....	5
Lane Wise Vehicle Counting	5
Vehicle Queue Management	5
OTHER OPTIONAL FEATURES FOR VEHICLE ANALYTICS.....	6
ALLGOVISION GUI.....	7
ALLGOVISION ALARM CENTER	9

COPYRIGHT INFORMATION

© 2015-2016 AllGo Embedded Systems Private Limited, Bangalore, India. All Rights Reserved.

All information contained in this document is the property of AllGo Embedded Systems Private Limited., It is not to be disclosed by the recipients to third parties, neither allowed to be reproduced by or for third parties in any form or by any means, electronic nor mechanical, including photocopying, without prior written permission from AllGo Embedded Systems Private Limited.

INTRODUCTION



This Data sheet gives the details of system requirements, features of AllGoVision Vehicle Counting & Reporting application.

The product analyzes rapidly the video for specific data, counts the number of Vehicles crossing a virtual line in the camera field of view. The software also provides Reporting & Analysis options.

SYSTEM REQUIREMENT

AllGoVision analytics has the following system hardware and software requirements.

CATEGORY	REQUIREMENT
Operating System	Windows Server 2003, 2008, 2012 Window XP, Vista, 7, 8
CPU	Intel Atom Embedded based PC to run up to 4 channels. RAM 2 GB Intel i3 server to run up to 8 channels. RAM 4 GB Intel Core 2 Quad server to run up to 15 channels, RAM 4 GB
Network	Ethernet, 100 Mbit or higher recommended
Hard Disk Space	10 GB for 1 week storage of reports 50 GB for 1 week storage of alarm files (images & videos)
Database	MySQL 5.5.2
Hardware Requirements	x86 Platform
Stand Alone version camera support	Models from Axis, Pelco, Bosch, Sony, Honeywell, Arecont Vision, IQInvision, Brickcom, Hikvision, Panasonic, ISD, Acti, Vision and others.
Edge Support	Axis and ISD cameras. Axis: M, P and Q Series.
VMS Support	Milestone, Genetec, Indigovision Note: With VMS all cameras supported by VMS will be supported
Reporting & Analysis Software	AllGoVision Alarm Center

Note: Vehicle Counting feature is also available with VMS support

INSTALLATION & ARCHITECTURE

The software is easy to install and simple to use with intuitive GUI. The AllGoVision vehicle counting supports counting of vehicles traversing through a passage / lane / road and crossing a virtual line.

Camera Installations

It supports 2 types of camera installations:

- **Angular:** For applications to cover wider area.
- **Overhead:** For the installation like in entry/exit points.

The application is integrated with advanced Auto Report E-mailer. The application facilitates in generating and exporting the Text, Graphical Reports.

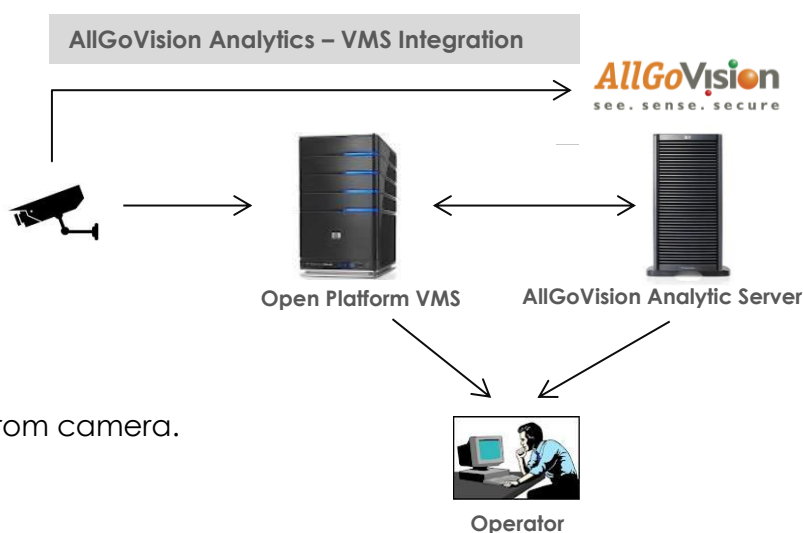
- **Environment:** Indoor (Inside Parking Lots) or Outdoor (Entry/Exit, Roads, Highways)
- **Accuracy:** 90-98%

Integration

AllGoVision Vehicle Counting application is available in 2 flavours:

With VMS:

- AllGoVision application is based on Open Platform Standards.
- It is integrated with VMS like Milestone, Genetec.



Without VMS:

- It is a standalone application.
- It works independent of VMS.
- Directly takes the video feed from camera.

Reporting & Analysis software:

- AllGoVision provides Alarm Management software Alarm Center
- It has options for plotting, exporting, Scheduling, Heat Map and Motion Map.

FEATURES & OPTIONS

The application supports below mentioned options:

- Application to run as service
- Vehicle counting report generation
- Auto Emailer for reports
- Administrator Login
- Zonal counting (add many cameras to zone)
- Scheduler to enable scheduling of Video Analytics
- Administrator Login
- Its own viewer, reporting and analysis of software
- Export of plot in JPEG and report in CSV format
- PDF format export supported
- Schedule of reports
- FTP upload of reports
- Heat map
- Motion map

Lane Wise Vehicle Counting

AllGoVision also provides lane wise Vehicle counting. This can be done in 2 ways:

- a) By using multiple cameras (one for each lane)
- b) By using single camera (Analytics can run on different regions in the same camera view)









Vehicle Queue Management

AllGoVision can provide insights for better waiting time management for vehicles in a queue – such as in toll plaza, drive in service counters, entry/exit of parking zones etc.

This can be done by vehicle counting applied on two cameras one at entry and the other at exit and then calculating the time difference between the counts at both the points.

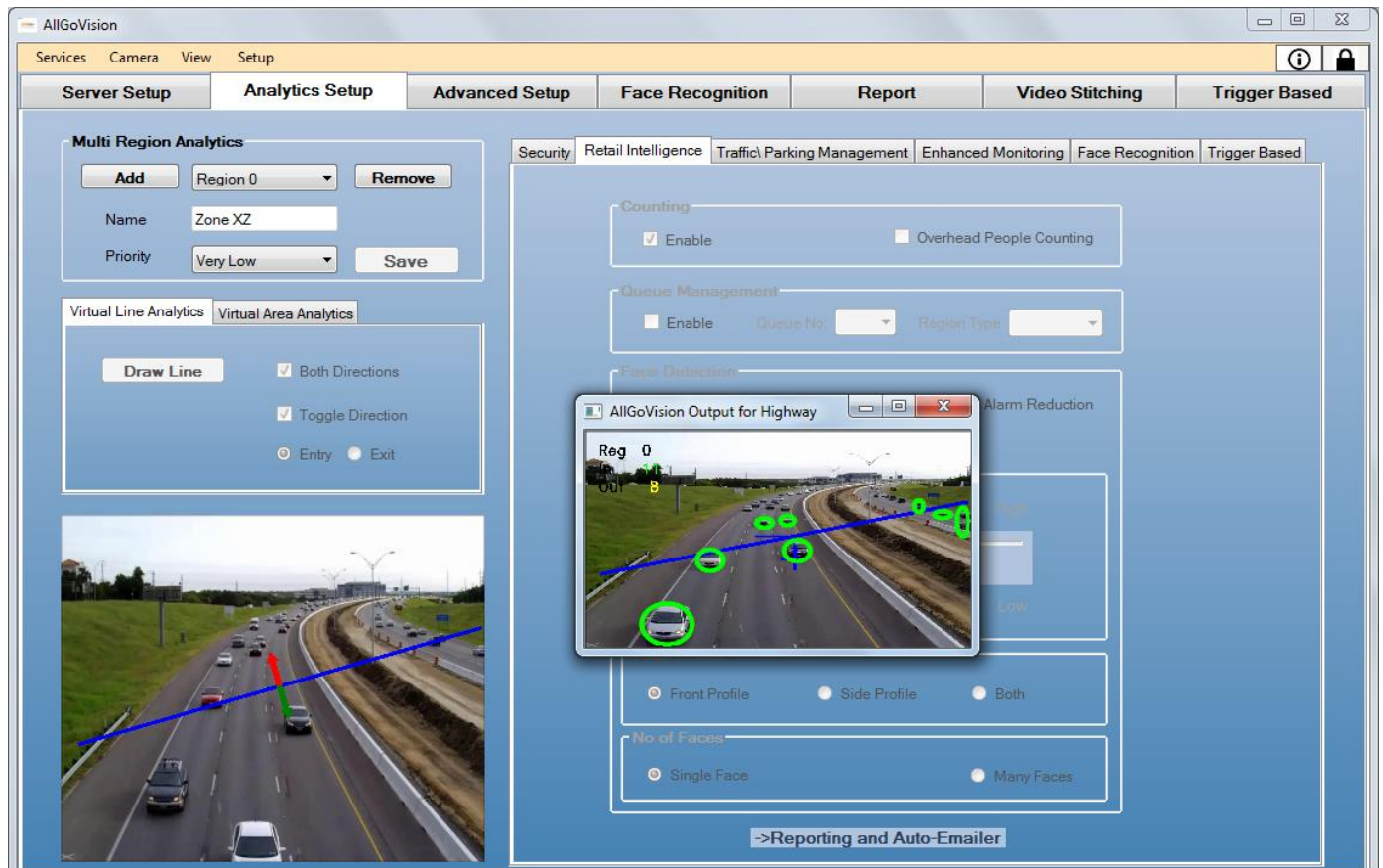


OTHER OPTIONAL FEATURES FOR VEHICLE ANALYTICS

Sl. #	Feature	Description	Example
1	Tailgating 	Detecting a vehicle following too closely the vehicle in front to get past access controlled entrances or barriers.	Unauthorized access at entrance or gated communities, office premises, toll gates etc.
2	Wrong Way Detection 	This feature is used for detecting vehicles moving in wrong direction	Detection of vehicles moving in wrong direction in one way system, vehicles entering through exit gates.
3	Congestion Detection 	This feature is used for detecting vehicle congestion in a virtual area.	Detection of Traffic Jams, unusual levels of vehicle congestion at specific locations etc.
4	Speeding Detection 	This feature detects speeding of the vehicle above speed limit	Over speeding on highways and city roads
5	Illegal Parking Detection 	This feature is used for detecting any Vehicle parked beyond a specified time in a virtual area	Vehicle parked in no-parking zones or unauthorized areas.
6	Parking Management 	This provides the free slots available for parking in parking place	Parking management of malls, building parking

ALLGOVISION GUI

AllGoVision product offers a graphical user interface with windows-oriented, tab based, point and pick interface. Extensive use of graphical icons, pull-down menus, buttons, check boxes, and radio-buttons are incorporated to reduce typing work to the minimum possible extent.



AllGoVision Management Client

AllGoVision product GUI consists of following seven tabs:

Server Setup Tab

The server setup tab consists of VMS or camera settings and other field details. You are able to view the video details from camera.

Analytics Setup Tab

The Analytics setup tab gives options to set the analytics fields for different features.

Advanced Setup Tab

This tab gives options to select advanced settings like camera environment, analytics processing complexity, shadow removal sensitivity, camera view, predefined object size and minimum object size.

Video Stitching Tab

This allows stitching of Videos from 2-8 cameras. The output is displayed in the same tab. The objects detected are also shown with Red rectangles.

Trigger Based

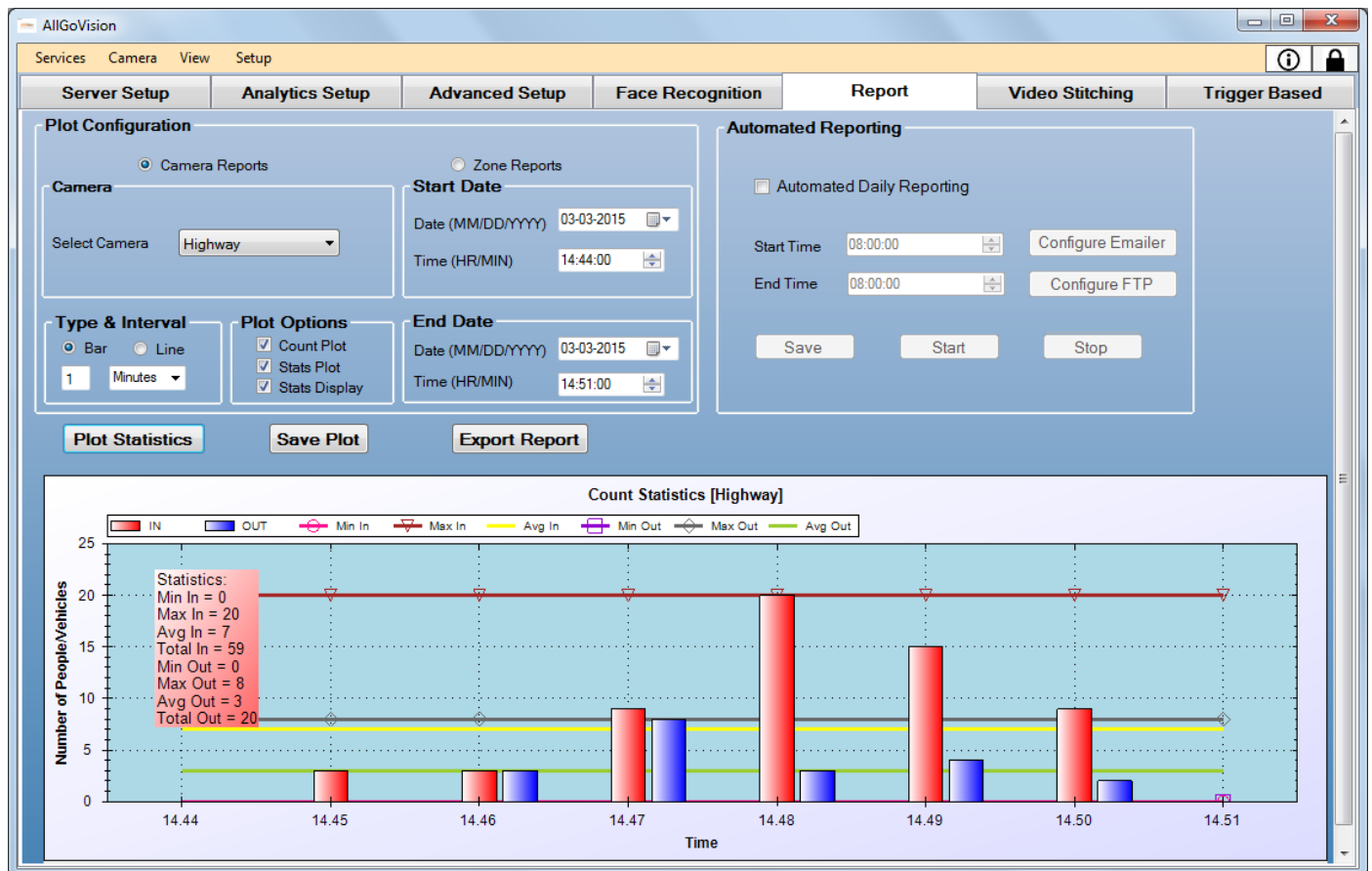
This allows running analytics from trigger like that from RFID.

Face Recognition Tab

This tab provides registration application for Face recognition.

Report Tab

This tab gives option to plot the statistics of vehicle counting. Both line and bar charts are possible. This also has auto e-mailer and export of plots and report.



AllGoVision Video Analytics - Report Tab

The application supports

- Report of counting with different time duration, interval and plot options.
- Export of plot in JPEG and report in CSV format
- Zonal Report with multiple cameras added in each zone
- Auto Report E-mailer
- FTP upload of reports
- Heat map
- Motion map

ALLGOVISION ALARM CENTER

AllGoVision Alarm Center is a Client to view all the alarms generated by AllGoVision analytics running on different systems across a LAN.

Features

- Alarm popup
- Alarm Video Playback
- Display alarms with date and time stamp
- Search: Filters to search alarms based on it types and properties
- Heat map and Motion map
- Plot and Export of reports in JPEG, Excel and PDF format
- Schedule of Report
- FTP/Email
- Database is MySQL

Alarm Details Table:

AlarmID	TimeStamp	AlarmName	ObjectType	CameraName	SourceLocati	AlarmDescrip	ObjectColor	ObjectSize
146	9/10/2013 10	OBJECTS_CO	Vehicle	Camera 1	Entrance	IN = 3 OUT =	Unidentified	Unidentified
145	9/10/2013 10	OBJECTS_CO	Vehicle	Camera 1	Entrance	IN = 2 OUT =	Unidentified	Unidentified
144	9/10/2013 10	OBJECTS_CO	Vehicle	Camera 1	Entrance	IN = 1 OUT =	Unidentified	Unidentified
143	9/4/2013 9:51	OBJECTS_CO	Vehicle	192.168.0.186	Entrance	IN = 3 OUT =	Unidentified	Unidentified
142	9/4/2013 9:51	OBJECTS_CO	Vehicle	192.168.0.186	Entrance	IN = 2 OUT =	Unidentified	Unidentified
141	9/4/2013 9:49	OBJECTS_CO	Vehicle	192.168.0.186	Entrance	IN = 1 OUT =	Unidentified	Unidentified
140	9/4/2013 9:49	OBJECTS_CO	Vehicle	192.168.0.186	Entrance	IN = 0 OUT =	Unidentified	Unidentified
139	9/4/2013 9:26	TRIPWIRE	Unidentified	Camera 1	Entrance	TRIPWIRE	Unidentified	Small

Alarm PopUp Details:

- OBJECTS_COUNT
- Camera 1
- Vehicle
- Entrance
- 9/10/2013 10:36
- IN = 3 OUT = 2

AllGoVision Alarm Center