



Datasheet

Video Smoke Detection Video Fire Detection



Version 3.7

This Specification Sheet gives the details of system requirements, feature details and other salient points of AllGoVision's Video Smoke Detection (VSD) & Video Fire & Detection (VFD) Features.

Revision Date: August, 2015

AllGo Embedded Systems Pvt. Ltd.

Email: agv_contact@allgosystems.com
Website: www.allgovision.com

Contents

COPYRIGHT INFORMATION	2
INTRODUCTION	3
SYSTEM REQUIREMENT	3
FEATURE DESCRIPTION	4
Technical Specification	4
Camera Installation Scenario.....	5
INTEGRATION.....	6
ALLGOVISION GUI.....	7

COPYRIGHT INFORMATION

© 2015-2016 AllGo Embedded Systems Private Limited, Bangalore, India. All Rights Reserved.

All information contained in this document is the property of AllGo Embedded Systems Private Limited., It is not to be disclosed by the recipients to third parties, neither allowed to be reproduced by or for third parties in any form or by any means, electronic nor mechanical, including photocopying, without prior written permission from AllGo Embedded Systems Private Limited.

INTRODUCTION

This Data sheet gives the details of system requirements, feature details of AllGoVision's Video Smoke Detection (VSD) and Video Fire Detection (VFD) features.

The Video Analytics product can provide rapid detection of smoke and fire appearing in the view and can send alarms as an early warning system.

SYSTEM REQUIREMENT

AllGoVision analytics has the following system hardware and software requirements.

CATEGORY	REQUIREMENT
Operating System	Windows Server 2003, 2008, 2012 Window XP, Vista, 7, 8
CPU	Intel i7, RAM 16 GB for 12 channels Intel 12 Core Xeon, RAM 32 GB for 24 channels
Network	Ethernet, 100 Mbit or higher recommended
Hard Disk Space	50 GB for 1 week storage of alarm files (images & videos)
Database	MySQL 5.5.2
Resolution and Frame Rate	640x480 and above up to 1080p Frame rate: 10 fps and above
Stand Alone version camera support	Models from Axis, Pelco, Bosch, Sony, Honeywell, IQinvision, Hikvision, Dahua, ISD, Panasonic, Brickcom, ArecontVision, IndigoVision, Cisco, Samsung, Acti, Vision, Digital Watchdog, and others (ONVIF Cameras).
VMS Support	Milestone, Genetec, IndigoVision, exacqVision, Cisco, Honeywell Note: With any other VMS supported through Alarm Center

FEATURE DESCRIPTION

- AllGoVision provides Video Smoke Detection (VSD) & Video Fire Detection (VFD).
- VFD/VSD will provide Fire and smoke detection for both indoor and outdoor environments.
- VFD/VSD can provide rapid detection of Fire & Smoke even when Fire & Smoke is formed in 10-15% of the view.
- The smoke can be with or without fire.

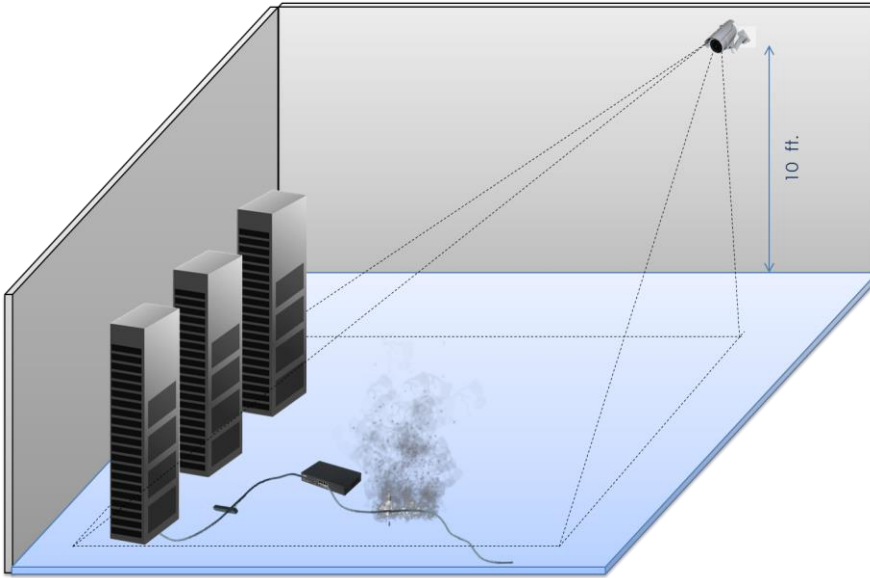


Technical Specification

1. Detection Range: Up to 30 meters
2. Camera Requirements:
 - Fixed Camera Mount
 - Minimum capture rate of 25 fps
 - H264 / MJPEG encoder
 - Installation angular at a height of 1.7m – 20m
3. Environment : Both Indoor and Outdoor
4. Nature of Smoke:
 - Cover at least 10-15% of the camera FOV
 - Slow Movement
 - Medium / High smoke density
5. Fire & Smoke Detection Time: 5 Seconds
6. Event Recording: +/- 10 seconds of smoke activity recording in mpeg4
7. Field Tuneable Parameters:
 - Smoke suspected zones from user
 - Smoke detection sensitivity (0-1)
 - Smoke detection trigger time (min 5 sec).

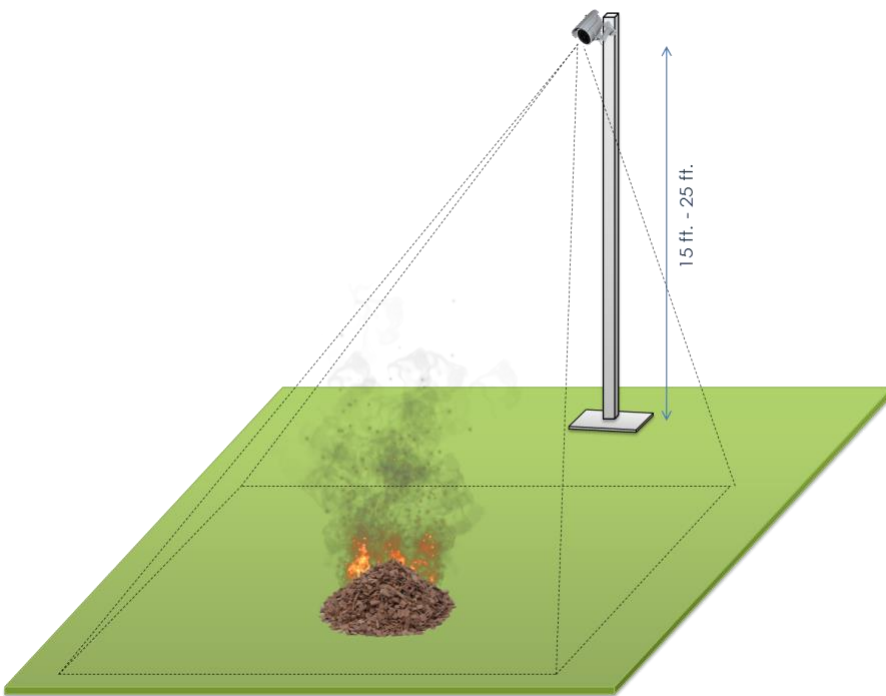
Camera Installation Scenario

Camera Setup for Smoke & Fire Detection (Indoor)



Angular Camera
Height of Installation (Indoor)
= approx. 10 feet
Focusing towards the monitoring zone
No occlusion scenario

Camera Setup for Smoke & Fire Detection (Outdoor)



Angular Camera
Height of Installation (outdoor) = 15 - 25 feet
Focusing towards the monitoring zone
No occlusion scenario

INTEGRATION

AllGoVision application is available in 2 flavours:

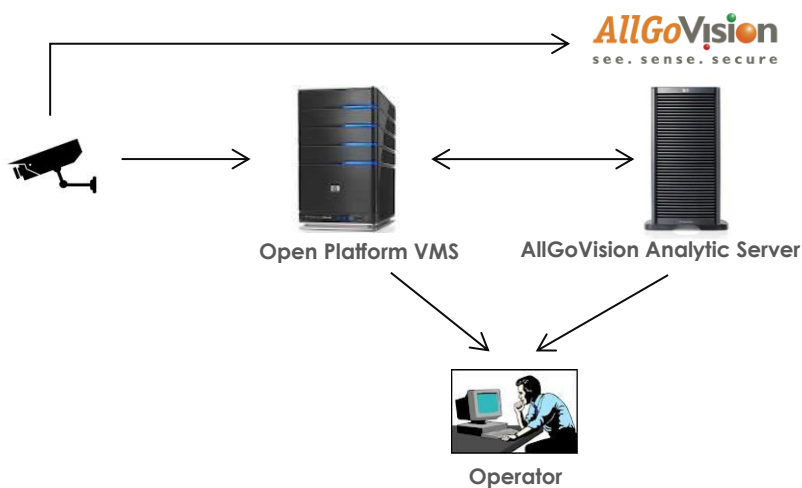
With VMS:

- AllGoVision application is based on Open Platform Standards.
- It is integrated with many VMS.

Without VMS:

- It is a standalone application.
- It works independent of VMS.
- Directly takes the video feed from camera.

Architecture: A simple architecture with VMS is shown below. The video from the CCTV camera is processed by AllGoVision video analytics server. The alarms can be viewed in the viewer.



AllGoVision Analytics – VMS Integration

ALLGOVISION GUI

AllGoVision product offers a graphical user interface with windows-oriented, tab based, point and pick interface. Extensive use of graphical icons, pull-down menus, buttons, check boxes, and radio-buttons are incorporated to reduce typing work to the minimum possible extent.

AllGoVision product GUI consists of following seven tabs:

Server Setup Tab

The server setup tab consists of VMS or camera settings and other field details. You are able to view the video details from camera.

Analytics Setup Tab

The Analytics setup tab gives options to set the analytics fields for different features.

Advanced Setup Tab

This tab gives options to select advanced settings like camera environment, analytics processing complexity, shadow removal sensitivity, camera view, predefined object size and minimum object size.

Video Stitching Tab

This allows stitching of Videos from 2-8 cameras. The output is displayed in the same tab. The objects detected are also shown with Red rectangles.

Trigger Based

This allows running analytics from trigger like that from RFID.

Face Recognition Tab

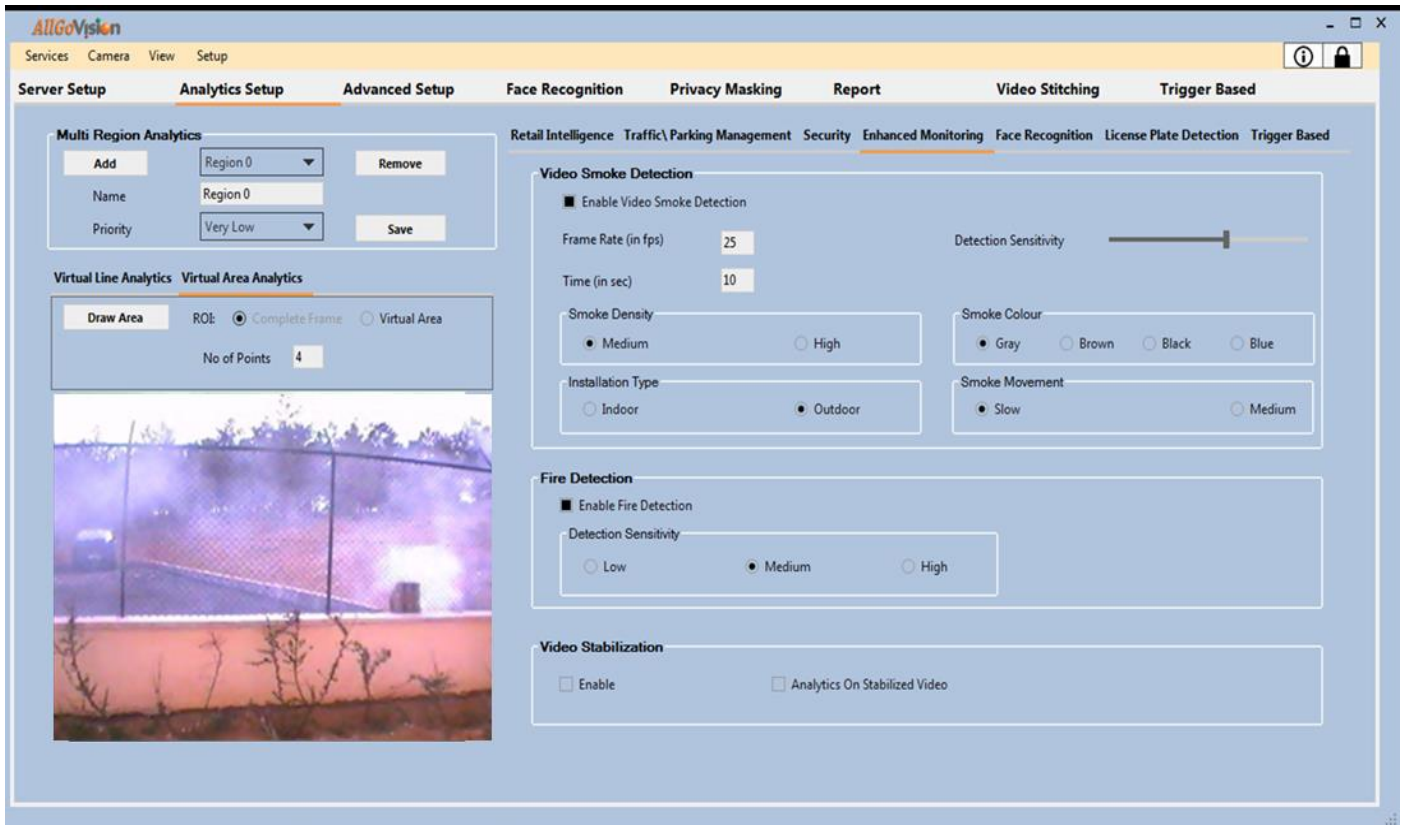
This tab provides registration application for Face recognition.

Face Masking Tab

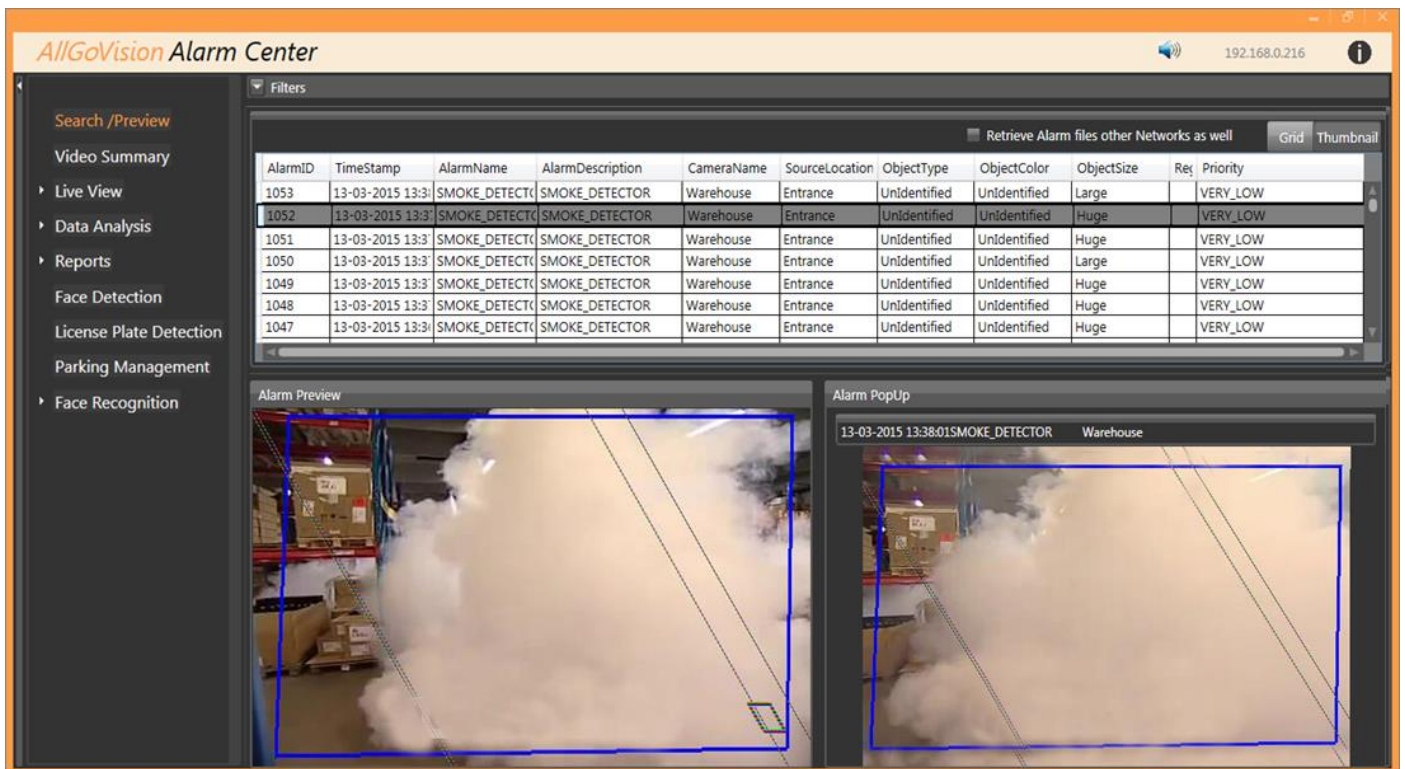
This allows face masking and object masking for privacy requirement for maintaining privacy of public under surveillance.

Report Tab

This tab gives option to plot the statistics of counting applications. Both line and bar charts are possible. This also has auto e-mailer and export of plots and report.



AllGoVision Management Client



AllGoVision Alarm Center – Alarm Management Client