

# UTM Content Security Gateway



### All-in-One Network Security Solution

The innovation of the Internet has created tremendous worldwide opportunities for e-business and information sharing. It has become essential for businesses to focus more on network security issues. The demand for information security has become the primary concern for the enterprises. To fulfill this demand, PLANET has launched the CS-950 UTM Content Security Gateway, an all-in-one appliance that carries several main categories across your network security deployments: firewall security protection, policy auditing (content filtering, VPN, and authentication), and easy management (CMS, wireless AP management and flow analysis). Furthermore, its VLAN, QoS and Outbound Load Balance features can improve the network efficiency while the web-based interface provides friendly and consistent user experience.



### Excellent Ability in Threat Defense

The CS-950 adopts Clam AV for virus scanning which detects over 800,000 kinds of viruses, worms, and Trojans. Once suspicious emails are detected, the CS-950 will modify the subject and record the mail. Besides, websites and FTP will be scanned once the function of antivirus is enabled in policy. It also employs multi-spam filters, auto learning, and personal Blacklist/Whitelist. It gives administrators the flexibility to enforce custom filtering. These help companies to create their own database by importing the latest spam update. Using the filter, the following action like forward or delete can be taken for any mail identified as a spam.

An advanced protection of UTM, the co-defense SNMP switch can be known on which computer and which switch port at the earliest possible time which prevents business network from failure, and monitor network-attached devices for conditions that warrant administrative attention.

### Physical Port

- 4 x 10/100/1000BASE-T RJ45
- 2 undefined Ethernet ports (WAN/LAN/DMZ)
- Multi-WAN function
- Outbound load balancing (Supported algorithms: Auto, Source IP, Destination IP or Manual)

### IP Routing Feature

- Static Route
- Dynamic Route (RIPv2)

### QoS

- Guaranteed and maximum bandwidth configurable
- Priority rule
- Policy mode
- Inside per source IP mode
- Outside per source IP mode

### Firewall Security

- Stateful Packet Inspection (SPI) firewall
- Blocking DoS/DDOS attack
- Internal firewall
- IP address block
- Block website by URL, IP, Domain, FQDN
- Anti-ARP spoofing
- Application control

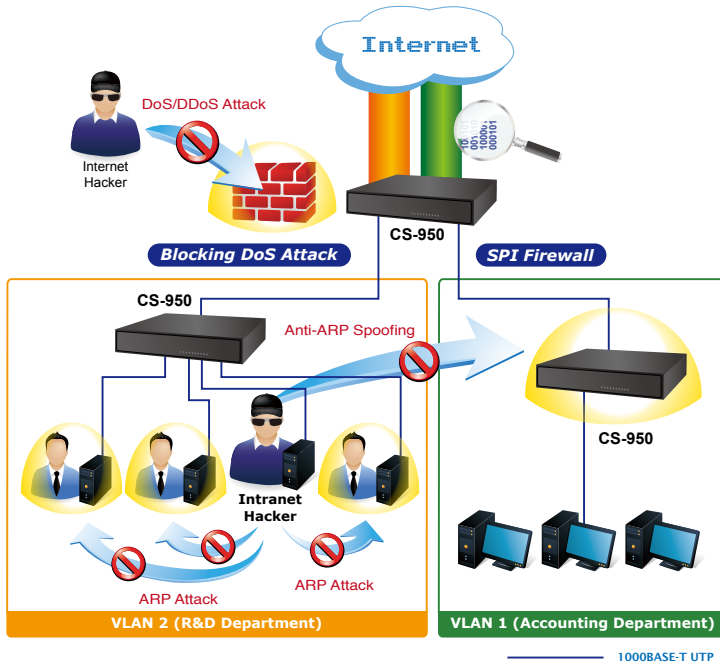
### Mail Security

- Antivirus base on auto-update antivirus engine
- Built-in multiple anti-spam algorithms, auto learning, and personal black/white list
- Mail log

### Advanced Security

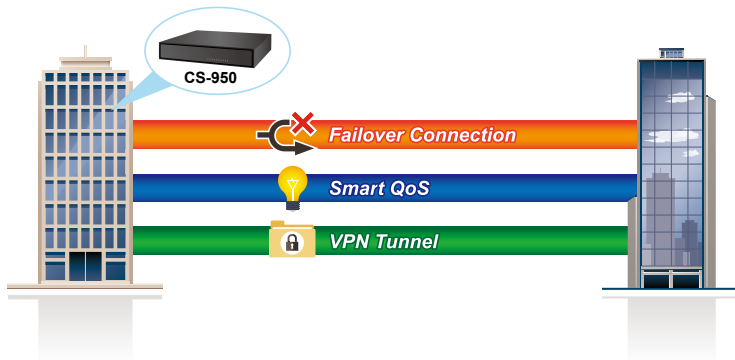
- IDP (Intrusion Detection and Prevention)
- User Authentication
- Switch co-defense
- Anomalous IP traffic analysis

Moreover, its built-in SPI (Stateful Packet Inspection) firewall and IDP (Intrusion Detection and Prevention) functions provide DoS detection and block concealed malicious code or worms delivered in TCP/IP protocols. As soon as an attack is suspected, the CS-950 will immediately notify the IT administrator and an extensive range of reports will be available for analysis.



### Cost-effective VPN Security Gateway Solution for SMBs

The CS-950 supports many popular security features including content blocking to block specific URL, authentication, IPSec, L2TP, SSL VPN, PPTP VPN server/client, outbound load-balancing, QoS, time schedule and more. Furthermore, it provides higher performance with all Gigabit Ethernet interfaces which offer faster speeds for your network applications. The Gigabit user-defined interfaces flexibly fulfill the network requirement nowadays, and the multiple WAN interfaces enable the CS-950 to support outbound load balancing and WAN fail-over features. The built-in multiple VPN tunnels (IPSec/PPTP/L2TP/SSL) enables businesses of any size to deliver secured connectivity for mobile employees, branch offices, and clients. As a result, the VPN functions not only provides high security level connection but also VPN fail-over features, a VPN redundant mechanism to always keep the VPN alive.



### VPN Features

- Max. Connection Tunnel Entries: 500 IPSec VPN tunnels, 200 PPTP VPN tunnels, 200 L2TP VPN tunnels or 50 SSL VPN tunnels
- Stateful packet inspection
- Encryption methods: DES, 3DES, AES, AES-128/192/256
- Authentication methods: MD5, SHA-1, SHA-256, SHA-512

### Networking

- Outbound load balance
- Failover for WAN
- PPPoE/Static IP/DHCP Client
- Protocols: TCP/IP, UDP, ARP, ICMP, FTP, IPv4, IPv6
- Virtual Server
- DDNS: DynDNS, 3322, No-IP, Planet DDNS & Planet Easy DDNS
- Transparent bridge/transparent routing

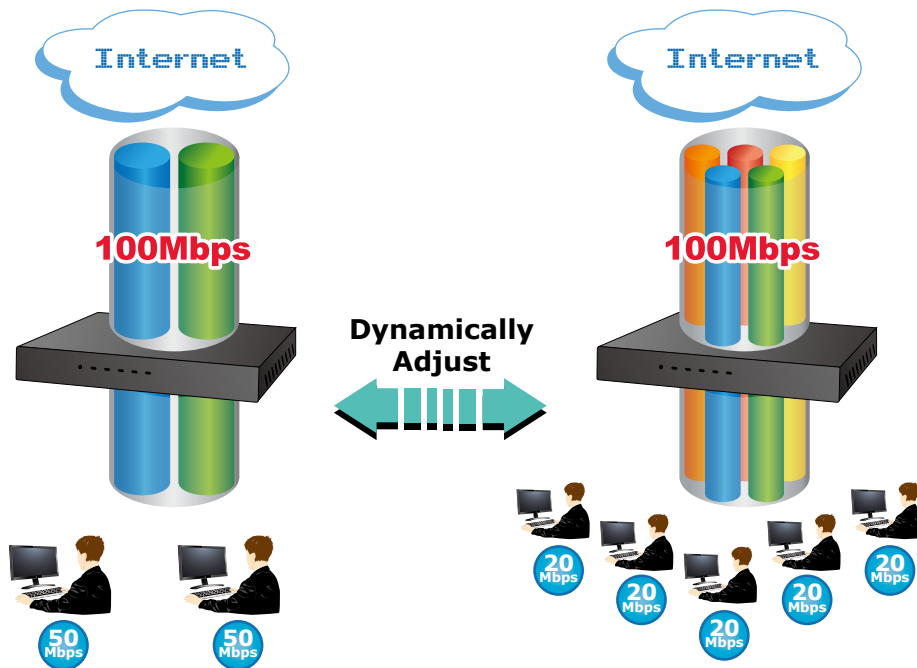
### Others

- Wireless AP Management
- CMS (Central Management System)
- HA (High Availability) mode
- Supported access by HTTP or HTTPS
- SNMP agent (SNMPv3-capable)
- Schedulable firmware upgrade through Web browser
- Comprehensive web-based management and policy setting
- Monitoring, logging, and alarms of system activities

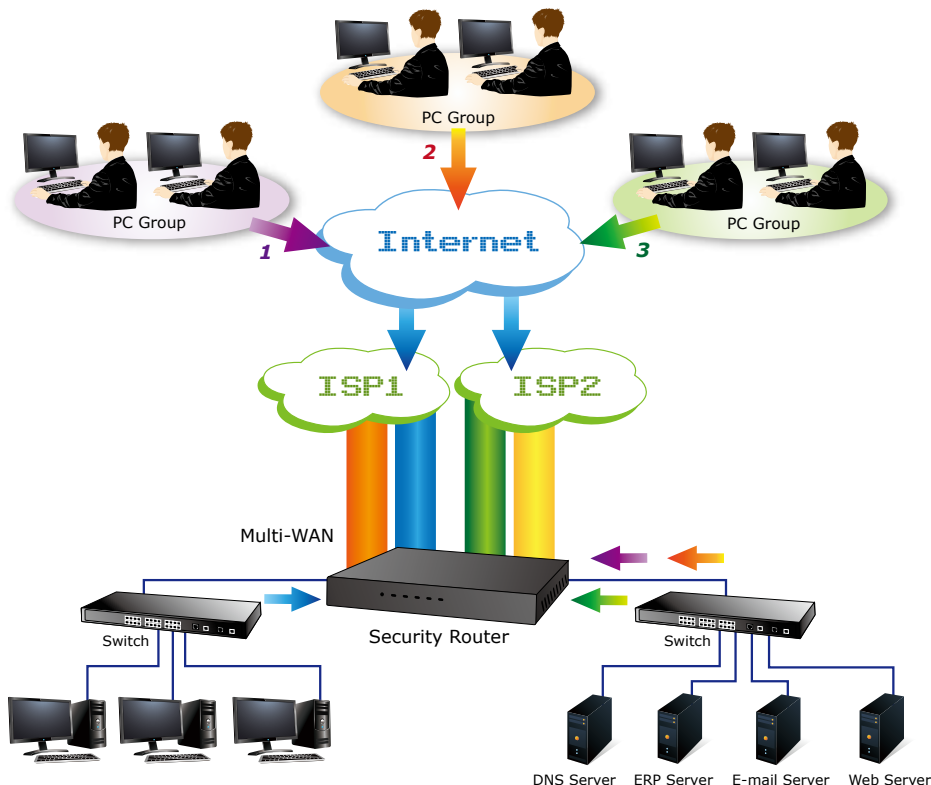
*Improving Network Efficiency*

The CS-950 has link redundancy, application control and many more functions to make the entire network system better. It is applicable to the small-scale sector (from 40 to 50 people), using a 9-inch desktop design, with four Gigabit ports (WAN/LAN/DMZ). The CS-950's economical price with complete cable management features make it an inevitable choice for the next-generation office network load balancer.

The CS-950's built-in fully-qualified domain name (FQDN) feature can automatically resolve the IP address corresponding to all. Users' network can be easily managed by just typing the URL of the secure websites (HTTPS) like Facebook, YouTube and Yahoo.



The CS-950 can connect multiple WANs with up to three different ISPs. It creates a stable and qualified VPN connection for many important applications such as VoIP, video conferencing and data transmission.

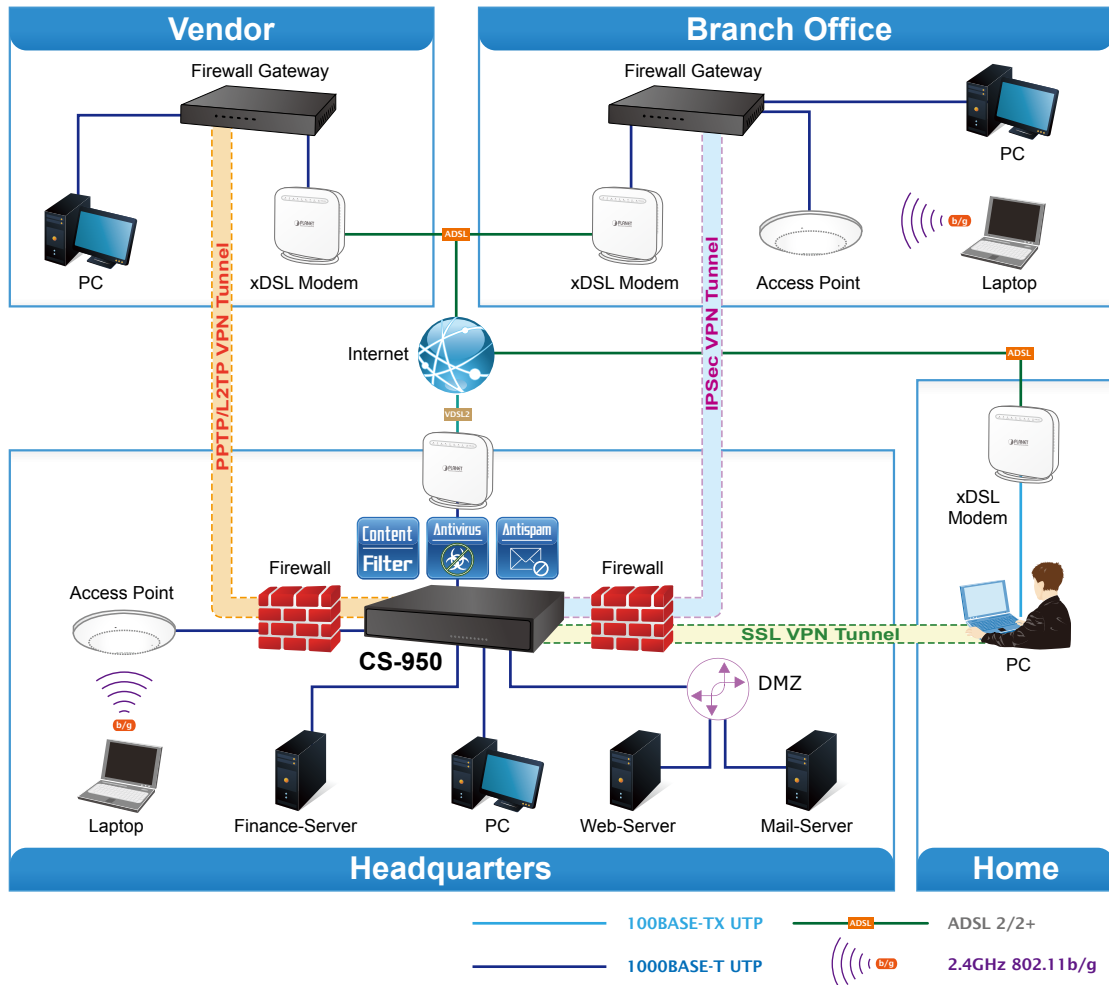


## Applications

### Multi-Homing VPN Security Gateway

PLANET CS-950 UTM Content Security Gateway has an SPI firewall with DoS detection. Through the FQDN function, it can easily block secure websites like Facebook, YouTube, Gmail, etc. With IPSec/PPTP/L2TP/SSL VPN solutions, the CS-950 provides secured data communication for branches, vendors, and mobile workers with a flexible way to connect back to the headquarters.

The CS-950 connects multiple WANs with up to three different ISPs. It creates a stable and qualified VPN connection for many important applications such as VoIP, video conferencing and data transmission.



## Specifications

Model	CS-950
<b>Hardware</b>	
Ethernet	4 10/100/1000BASE-T RJ45 Ethernet ports
Console Port	DB-9 console port (115200, 8, N, 1)
USB Port	2 USB 2.0 port for system configuration backup and recovery
Reset Button	Reset to factory default
Thermal Fan	1
<b>Software</b>	
Management	Web browser
Operation Mode	NAT, Transparent Bridging, Transparent Routing
Routing Protocol	Static Route, Dynamic Route (RIPv2)
NAT Throughput	Max. 1.8Gbps
Max. Connections	Max. 1.2 million
Mail Scan/Day	Max. 432000
Firewall Security	Stateful Packet Inspection (SPI) Internal firewall
Multiple Subnet	Supports max. 255 multiple subnets
Outbound Load Balancing	Supported algorithms: Auto, Source IP, Destination IP or Manual
Protocol	IPv4, IPv6, TCP, UDP, HTTP, HTTPS, SMTP, FTP, NTP, DNS, PLANET DDNS, PLANET Easy DDNS, DHCP, PPPoE, SNMP, QoS, IEEE 802.1q
Content Filtering	URL blocking IP blocking Domain blocking Black/White list
Application Blocking	P2P blocking (Bit Torrent, eDonkey, WinMX and more) IM blocking (WeChat, Yahoo Messenger, WhatsApp, QQ, Skype, Google Talk and more) Multimedia streaming (PPLive, PPStream, Tornado Broadcast and more) Web-based mail (Gmail, Yahoo, Hotmail and more) Online game (World of Warcraft, QQGame and more) Remote controlling (TeamViewer, Remote Desktop and more) Web (YouTube, Facebook and more) VoIP (SIP, H.323 and more)
QoS	Smart QoS Guaranteed and maximum bandwidth configurable Priority levels Policy mode/Inside Per source IP mode/Outside Per source IP mode
User Authentication	Max. concurrent connections up to 256 entries Supports local database, RADIUS, POP3 and AD authentication
AP Management	Max. 50 APs
Logs	System Operation Log, Configuration Log, Network Log, Objects Log, Network Services Log, Advanced Protection Log, Mail Security Log, IDP Log and VPN Log
Reports	Show CPU/RAM system load, network flow and traffic ranking Mixed format reports: tabular and graphical Automated Daily/Weekly Report Reports sent via Email
Watch-Dog	Auto-reboot upon failure
Others	Outbound load balancing Failover for WAN CMS (Central Management System) HA (High Availability) mode FQDN Switch co-defense IDP (Intrusion Detection and Prevention)
<b>Antivirus and Antispam</b>	
Antivirus Engine	Clam AV
Antivirus Action	Modify the subject Record the suspicious mail information
Antispam Algorithms	Fingerprinting, bayesian Filtering, auto learning, spam characteristics filtering and personal black/white list
Antispam Action	Modify the subject Delete the spam mail Record the suspicious mail information

<b>VPN</b>	
VPN Function	IPSec, PPTP server and client, L2TP, SSL
IPSec VPN Tunnels	Max. 500
PPTP VPN Tunnels	Max. 200
L2TP VPN Tunnels	Max. 200
SSL VPN Tunnels	Max. 50
VPN Throughput	Max. 90Mbps
Encryption Methods	DES, 3DES, AES or AES-128/192/256 encrypting
Authentication Methods	MD5/SHA-1/SHA-256/SHA-512 authentication algorithm
<b>General</b>	
Power Requirements	12V DC, 3.3A
Power Consumption	22W max.
Weight	0.96kg
Dimensions (W x D x H)	232 x 152 x 44 mm
Regulatory Compliance	CE, FCC
Reliability	MTBF > 63449hrs
<b>Standards Conformance</b>	
Regulatory Compliance	CE, FCC
<b>Environment Specifications</b>	
Operating	Temperature: 0 ~ 40 degrees C Relative Humidity: 5 ~ 95% (non-condensing)
Storage	Temperature: -20 ~ 75 degrees C Relative Humidity: 5 ~ 95% (non-condensing)
<b>Standard Accessories</b>	
Packet Contents	CS-950 x 1 Quick Installation Guide x 1 Adapter x 1 Power Cord x 1 Console Cable x 1 Ethernet Cable x 1 Screw Package x 1 Rack-mount Ear x 2 Feet Pads x 4

## Ordering Information

CS-950	UTM Content Security Gigabit Gateway
--------	--------------------------------------

## Related Products

MH-2300	Gigabit Multi-Homing VPN Security Gateway
WDAP-702AC	1200Mbps Dual Band 802.11ac Outdoor Wireless AP
WBS-502AC	900Mbps 802.11ac Outdoor Wireless CPE
WAP-200N	300Mbps 802.11n Outdoor Wireless AP
WAP-500N	300Mbps 802.11n Outdoor Wireless AP
WBS-200N	300Mbps 802.11n Outdoor Wireless CPE
WBS-500N	300Mbps 802.11n Outdoor Wireless CPE
XGS3-24042	Layer 3 24-Port 10/100/1000T + 4-Port 10G SFP+ Stackable Managed Switch
XGS3-24242	Layer 3 24-Port 100/1000X SFP + 16-Port Shared TP + 4-Port 10G SFP+ Stackable Managed Switch

### PLANET Technology Corporation

11F., No.96, Minquan Rd., Xindian Dist., New Taipei City  
231, Taiwan (R.O.C.)  
Tel: 886-2-2219-9518 Fax: 886-2-2219-9528  
Email: sales@planet.com.tw www.planet.com.tw



PLANET reserves the right to change specifications without prior notice. All brand names and trademarks are property of their respective owners. Copyright © 2017 PLANET Technology Corp. All rights reserved.

CS-950