

## 16-Ch Hybrid Digital Video Recorder



### Efficient Solution for Combining IP and Analog Cameras

PLANET HDVR-1630 is a hybrid DVR recorder which is able to record video and data from traditional analog, AHD (Analog High Definition) and network IP security cameras. The advantage of a hybrid DVR recorder is that it lets you use currently installed analog security equipment along with newer network IP technology. This enables you to upgrade your surveillance system to IP equipment at your own pace, according to your budget. The HDVR-1630 is the 16-channel, embedded system with HDMI local display and features recording, live view, playback and backup functions, etc. With easy-to-remember DDNS feature, the HDVR can be placed either in LAN or WAN for easy installation. Besides, designed for various surveillance applications via RS485 interface, the HDVR is capable of controlling most types of protocols. For the purpose of general monitoring, the HDVR-1630 offers app viewer, Web browser and CMS (Central Management Software) for multi-platform remote access, thus making it an ideal solution for various applications, such as retail stores, communities, SMBs, supermarkets, restaurants and schools.



### Hardware

- Embedded, highly-reliable standalone HDVR
- Supports 16-ch BNC connectors
- Supports VGA/HDMI dual local display
- Supports 3.5" SATA x 1 HDD
- Supports RS485 for PTZ control

### Video & Audio

- Supports H.264 compression
- Max. video resolution up to 1080
- Supports hybrid mode for combination of IP, traditional analog and AHD cameras
- 2-way audio support with enhanced audio quality

### Video Recording & Backup

- Simultaneous recording and live video streams
- Manual or scheduled recording of 16 cameras simultaneously
- Video recycling function 24/7 for easy inquiry of suspicious events
- Exports recorded video file in AVI format to USB device
- Instant Event Notification

### Network Service

- Easy access with PLANET Dynamic DNS and built-in NTP Server
- Supports PPPoE, DHCP and manual settings

### Easy Installation & Management

- ONVIF compliant for interoperability
- Supports multiple languages
- Automatically discovered by management software
- Web-based and management utility for easy configuration
- Up to 256 channels with the central management software
- Supports two USB2.0 ports for mouse control and backup
- Supports mobile phone remote viewer, Web UI and CMS

*Hybrid Integration*

The HDVR-1630 allows each of its 16 channels to be connected to either an analog camera or an IP camera. If you already have analog cameras and want to add on a few IP cameras, the HDVR-1630 is definitely your ideal choice. In addition, as the HDVR complies with ONVIF, it is interoperable with any third-party IP cameras, thus omitting compatibility issue and allowing you to add more cameras.

**Hybrid Integrated IP and AHD System**



*High Resolution Local Display*

The HDVR-1630 provides HDMI and VGA video output interfaces for dual local displays, which can be connected to HDMI monitor or VGA monitor for live view monitoring with video output of maximum 1920 x 1080 resolutions. Due to local display, it can eliminate the need for a separate PC to view video from the unit. Besides, it also can be operated with the USB mouse to configure and monitor all the system easily.

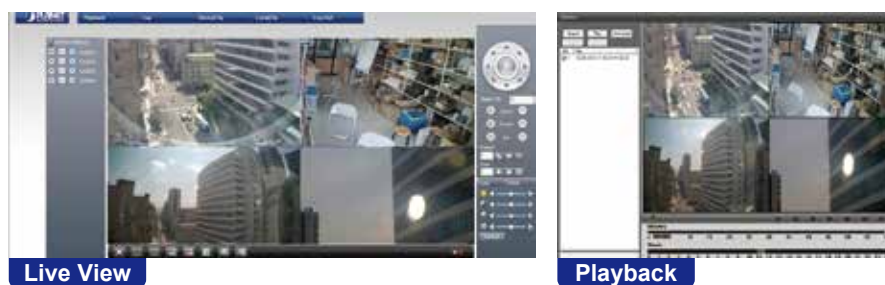


**Dual Local Displays**

*Real-time Remote Monitoring*

Video from the HDVR system can be accessed with Web browsers and mobile devices. With remote monitoring, you can view live and recorded video, allowing for easier monitoring of your video deployments, and the ability to react quickly to alarms and events.

**Real-time, Remote Monitoring**



*Central Management System (CMS)*

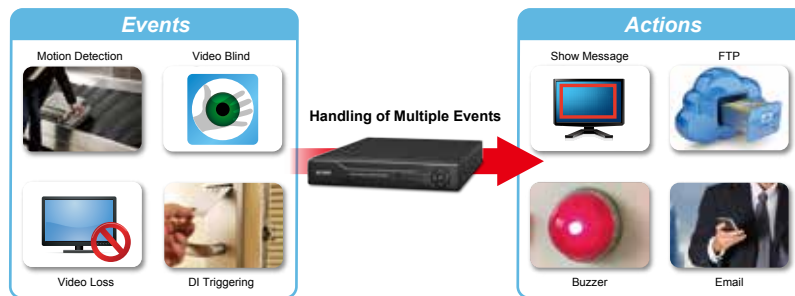
Not just for small scale applications such as retail stores and SMBs, the HDVR system is expandable for multi-site management with the bundled CMS software. The CMS software is able to manage up to 256 channels of cameras simultaneously. With friendly graphic interface, users can control any cameras or HDVRs easily and make a quick response when event is triggered. With CMS support, users are able to make surveillance monitoring more efficient.



**Applications**

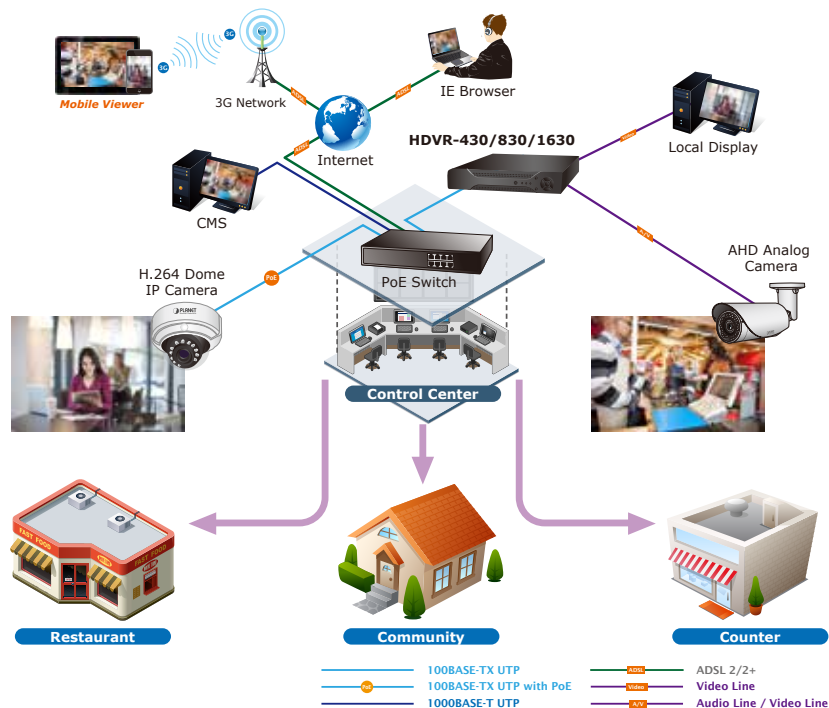
*Advanced Event Management*

The HDVR-1630 is equipped with a smart alarm-triggering mechanism and supports various alerts and abnormal events. When it comes to a critical event, having a smart and responsive event management in place is essential for video surveillance system. This feature greatly strengthens the security and management efficiency of PLANET HDVR system.



*Perfect for Indoor Surveillance Applications*

PLANET HDVR system can be controlled and monitored both in the local LAN and the remote site via Internet. Users can also login from their mobile phones to check the monitoring screen anywhere, anytime. It is especially perfect for indoor surveillance in such places as retail stores, communities, restaurants, etc.



## Specifications

Product	<b>HDVR-1630</b>
<b>Hardware</b>	
Ethernet	1 x RJ45, 10/100BASE-TX
BNC Interface	16
USB Interface	2 x USB 2.0 for backup device and mouse
Video Interface	VGA/HDMI video interface
Audio Interface	2 x audio-in, 1 x audio-out
Storage Device	1 x 3.5" SATA hard disk connector (max. 4TB)
LED	Power, Record, Alarm
Button	Menu, ESC, Direction & Enter
<b>Camera</b>	
Max. Channels	16-channel cameras
Additional Camera	Manual/Smart Camera Search
<b>Video</b>	
Video System	PAL (625line, 50f/s); NTSC (525line, 60f/s)
Compression	H.264
Resolution	IP camera: 1080p/720p Analog camera: AHD-H (1080p), AHD-M (720p), AHD-L (960H), D1, HD1, CIF
Encode Capacity	16-ch AHD-M
Decode Capacity	4-ch AHD-M
Hybrid mode	Analog cameras: 16-ch AHD-NH (1080n), 16-ch AHD-M (720p), 8-ch AHD-M (720p), 16-ch AHD-L (960H) Analog cameras & IP cameras: 8-ch AHD-M (720p) & 8-ch 720p, 4-ch AHD-M (720p) & 4-ch 720p IP cameras: 20-ch 960H, 4-ch 1080p, 1-ch 1080p & 8-ch 720p
Motion Detection	Zones: 192 (16 x 12) detection zones Sensitivity: multi-level sensitivity (only local channels)
<b>Audio</b>	
Audio Type	2-way
Audio Format	G.711A
<b>Live view</b>	
Display Division	1, 4, 8, 9, 16
Snapshot	Video snapshot in JPEG format
<b>Playback</b>	
Record	Manual, alarm, motion detection, schedule
Local Playback	1~16-ch simultaneous playback; Supports up to 4-channel playback (local input mode)
Play Method	Play, Pause, Stop, Slow, Fast, Prev. Frame, Next Frame Search by time, calendar, event, channel
Download	Back up file to specific local HDD partition
<b>Monitor</b>	
Display Quality	1920 x 1080, 1440 x 900, 1280 x 1024, 1280 x 720, 1024 x 768
<b>Network and Configuration</b>	
Network Service	TCP, UDP, HTTP, DHCP, DNS, DDNS, RTSP, NTP, UPnP, FTP, SMTP
Security	Password protection, IP address filtering
<b>Triggers and Event</b>	
Event Type	System Events – – No storage – Storage Error – Storage No Space – Net Disconnection – IP Conflict Camera Events – – Motion Detection, Video Blind, Video Loss, DI
Event Action	– Show Message – Buzzer – Mobile Reported – Send e-mail – FTP Upload – Write Log
<b>Management</b>	
Remote Session	5
Privileges	Live View, Playback, System Configurations, Camera Configurations, Recording Configuration, Event Configuration, Maintenance
User Interface	Graphic local user interface (Operated by mouse) Web browser (IE) CMS utility

Log Type	All, System, Config, Storage, Alarm Event, Week Day, Account, Playback
Software Utility	Search utility, CMS, App
<b>Environment</b>	
Power Requirement	12V DC, 2A
Consumption	15W (without HDD)
Operating Temperature	0~55 degrees C
Storage Temperature	0~60 degrees C
Humidity	10~90% (non-condensing)
Weight	1.7kg
Dimensions (W x D x H)	255 x 225 x 45 mm

## Ordering Information

HDVR-1630	16-Ch Hybrid Digital Video Recorder
-----------	-------------------------------------

## Related Products

CAM-AHD325	AHD 1080p IR Bullet Camera
CAM-AHD425	AHD 1080p IR Dome Camera
ICA-3150	720p IR Bullet PoE IP Camera
ICA-4150	720p IR Dome PoE IP Camera
ICA-W7100	720p Wireless IR PT IP Camera
ICA-3250	1080p IR Bullet PoE IP Camera
ICA-4250	1080p IR Dome PoE IP Camera
HDVR-430	4-Ch Hybrid Digital Video Recorder
HDVR-830	8-Ch Hybrid Digital Video Recorder