

5 Mega-pixel Wireless Fisheye IP Camera



Compact Wireless Panoramic Camera for Wide View Surveillance

PLANET ICA-W8500 5 mega-pixel Wireless Fish-Eye IP Camera supports H.264, MPEG-4, and JPEG compression formats and delivers excellent picture quality in up to 1920 x 1920 pixels at 15 frames per second (fps). Incorporating the professional 5 MP-resolution sensor, the ICA-W8500 provides high quality images and panorama function with quad view to enable images of monitoring and recording from four different angles to be displayed simultaneously. It offers 180° panoramic view by wall mount installation and 360° surround view in deployment of ceiling mount. Therefore, users do not need to install multiple IP cameras and hence save tremendous installation and maintenance costs. Moreover, the unique design makes it the ideal solution to surveillance applications in boutiques, stores, restaurants, indoor public areas, etc.



Camera

- Fish-Eye Lens to bring 360°/180° panoramic wide angle view
- 1/2.5" 5 mega-pixel progressive scan CMOS sensor
- Unique Fish-Eye hardware correction technology
- 1.9 lux minimum illumination at F2.8
- 9 different video modes including digital PTZ function
- Removable IR-cut Filter for Day and Night Function

Video / Audio

- H.264 and M-JPEG video compression simultaneously
- Simultaneous multi-stream support
- H.264 high profile, main profile and baseline
- Up to 15fps for 1920 x 1920 resolutions
- 2DNR to improve picture quality at low Lux
- WDR Enhancement function strengthens visibility under extremely bright or dark environments
- 2-way audio support with enhanced audio quality

Network and Configuration

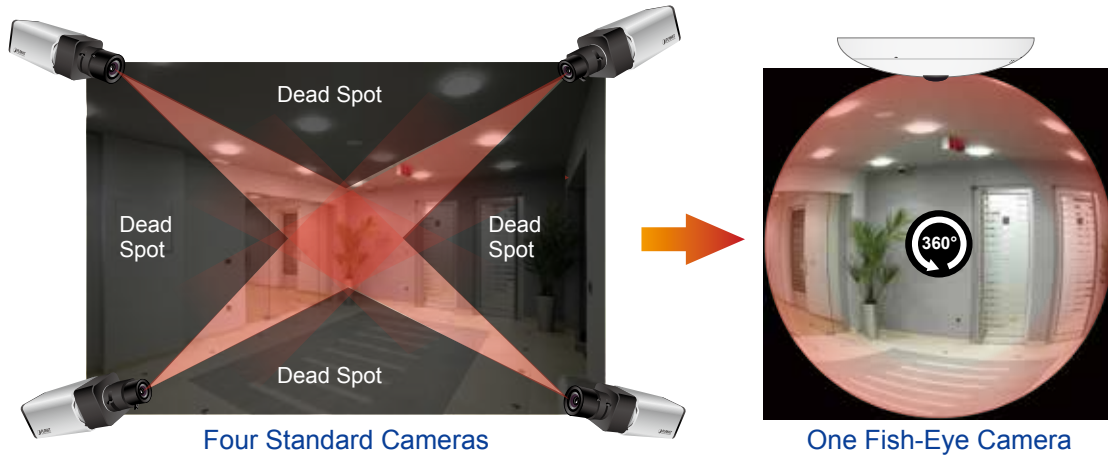
- IEEE 802.11b/g/n wireless LAN with WEP and WPA encryptions
- Auto MDI/MDI-X supported
- UPnP® support for network setup and configuration
- RTSP / UPnP / 3GPP / HTTPS protocols selectable

Easy Installation & Management

- Advanced e-PTZ, including preset point
- 10 motion detection areas / E-mail and FTP alert
- Micro SD card local video recording supported
- Digital Input/Output for integration with sensors and alarms
- Cam Viewer 3 Central Management Software supported

Full Surveillance with 360° Surround View

Furthermore, the ICA-W8500 is a fish-eye camera that allows you to monitor all angles of a location using just one camera and thus saves lots of the traditional mechanical Pan/Tilt maintenance cost. The distorted hemispherical image of the fish-eye camera will be converted into the conventional rectilinear projection. Without installing any software, you can watch live view and utilize functions such as motion detection and camera tampering through the Web interface using a web browser. Distortion correction feature of the ICA-W8500 can fix the camera video so you can use e-PTZ to zoom in, zoom out, and pan across your camera's video to survey a large area easily.



Exceptional Image Quality

Together with powerful image processing attributes like Wide Dynamic Range (WDR) and Dimension Noise Reduction (DNR) technology, the ICA-W8500 is able to filter the intense backlight surrounding a subject and remove noises from video signal. Thus, the ICA-W8500 offers an extremely sharp and clear image quality even under any challenging lighting conditions.



Day & Night Surveillance

The ICA-W8500 features an automatic, removable infrared-cut filter, which enables the camera to provide color video when there is sufficient light, and black and white video in dark conditions. The camera is able to maintain clear images 24 hours a day.



Advanced Event Management

The ICA-W8500 provides surveillance functions including DI/DO alarm, micro SD card support for local storage, and 2-way audio that enables audio communication between local and remote ICA-W8500 sites by connecting the external microphone and speaker. It can also be applied in video conferencing via the 2-way audio features.

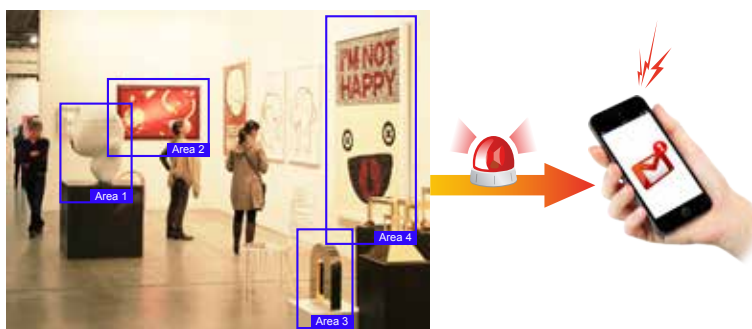
2-Way Audio



Motion Detection & Alarms

It is easy to configure motion detection windows by the web management interface of the ICA-W8500. Users can have total control in determining the object and sensitivity of these motion detection windows. The ICA-W8500 is able to send email notifications, alerts and snapshots to any dedicated email account. This will alert the user any event in real time, no matter where the recipient may be.

Motion-activated Recording & Instant Email Alert



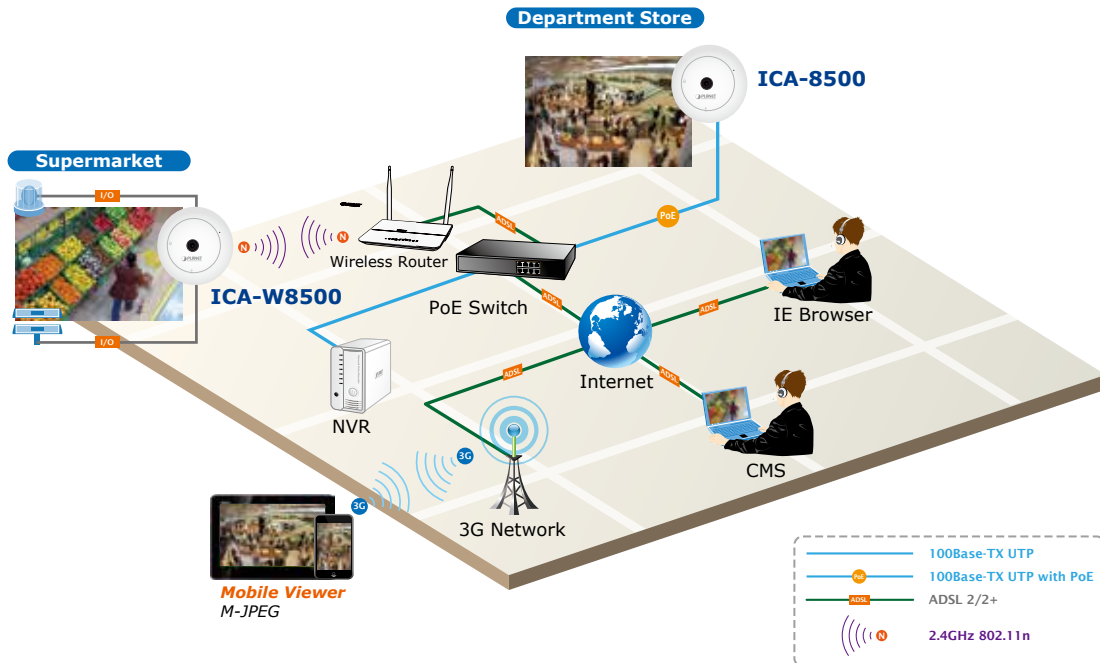
High Quality Streaming via 11n Wireless Connectivity

The ICA-W8500 adopts IEEE 802.11n wireless technology to communicate at maximum wireless signal rate and ensures secure transmission with WEP and WPA encryptions. It allows you to stream high quality video to remote sites and mobile devices. A Site Survey feature also allows you to view and connect to nearby wireless networks with ease. Complying with ONVIF, the ICA-W8500 is therefore interoperable with the third brand camera in the market, which greatly supports users to integrate with their existing surveillance network. It also includes 64-CH central management software for ease of maintenance and remote monitoring. The ICA-W8500 is indisputably the top choice for reliable and high performance surveillance.



Applications

PLANET ICA-W8500 provides various surveillance applications to deliver 360° panoramic clear images. It can offer identification of objects and people, perfect for surveillance needs from all aspects such as POS / cashier of a shop, the mall, lobby, public areas, etc.



- Source view (10)
- 180° Single broad view (1P wall)
- 360° Panoramic view (1P ceiling)
- 360° Quad view (4R)
- 360° Double broad view (2P)
- 180° Triple view (1P2R)
- 360° Triple view (1P2R)
- Triple with Source view (102R)
- Quad with Source view (103R)

Specifications

Product	ICA-W8500
Camera	
Image Device	1/2.5" 5 mega progressive scan CMOS image sensor
Lens	FOV=186±4°(D/H/V), F=2.8, f=1.05mm Mechanical IR-cut Filter Angle of view : 360 degrees view angle
Min Illumination	1.9 Lux @ F2.8, without IRE (Color) 0.1 Lux @ F2.8, without IRE (B/W)
Effective Pixels	1920 x 1920 pixels (4:3)
Video	
Video Encoder	H.264 / M-JPEG / MPEG
Video Resolution	H.264: 1920 x 1920 / 1920 x 1080 / 1600 x 1200 / 1440 x1080 / 1280 x 1024 / 800 x 600 / 640 x 480 / 320 x 240 M-JPEG: 1920 x 1920 / 1920 x 1080 / 1600 x 1200 / 1440 x1080 / 1280 x 1024 / 800 x 600 / 640 x 480 / 320 x 240 MPEG4: 1920 x 1920 / 1920 x 1080 / 1600 x 1200 / 1440 x1080 / 1280 x 1024 / 800 x 600 / 640 x 480 / 320 x 240
Frame Rate	Up to 15fps for 1920 x 1920 resolutions
Image Setting	Day / Night Mode 2D noise reduction WDR Brightness, Saturation, Contrast, Sharpness Rotate/Mirror Text, time and date overlay
Streaming	Streaming over UDP, TCP, or HTTP M-JPEG streaming over HTTP (server push) Controllable frame rate and bandwidth Constant and variable bit rate (M-JPEG / H.264) Simultaneously multi-profile streaming ROI
Rate Control	CBR (Constant Bit Rate) VBR (Variable Bit Rate)
UI Layout	Source view (1O) 180° Single broad view (1P wall) 360° Panoramic view (1P ceiling) 360° Quad view (4R) 360° Double broad view (2P) 180° Triple view (1P2R) 360° Triple view (1P2R) Triple with Source view (102R) Quad with Source view (103R)
Audio	
Audio Streaming	2-way audio
Audio Compression	RTSP: G.711 64kbps
Microphone	Built-in microphone
Speaker	Built-in speaker
Network and Configuration	
Network Standard	IEEE 802.3 10Base-T IEEE 802.3u 100Base-TX IEEE 802.11b/g/n
Network Protocol	HTTP, HTTPS, TCP/ IP, IPv4, UDP, SMTP, FTP, DHCP, DDNS, NTP, DNS, ARP, RTSP, RTP, UPnP, ONVIF (Profile S), Multicast
Antenna connector	1x2db dipole antenna
Frequency	2.4GHz
RF Transmission Power	OFDM: 13dBm CCK: 17dBm
Output Power	802.11n: 12dBm (default) +/- 1dBm 802.11g: 14dBm (default) +/- 1dBm 802.11b: 17dBm (default) +/- 1dBm

Data Rate	802.11n: up to 150Mbps 802.11g: 6, 9, 12, 18, 24, 36, 48, 54Mbps 802.11b: 1, 2, 5.5, 11Mbps
Receive Sensitivity	802.11b (11Mbps): CCK@8% PER = -88dBm 802.11g (54Mbps): OFDM @ 10% PER = -72dBm 802.11n Draft 6.0: HT20 @ 10% PER = -66 dBm HT40@ 10% PER= -61dBm
Security	Password protection, Https encryption, user access log
Users	Depending on streaming data rate used
System Integration	
Application Programming Interface	Open API for software integration ONVIF
Alarm Triggers	Intelligent video motion detection
Alarm Events	File upload via FTP, e-mail or Micro SD card Notification via e-mail
Environment	
Power Requirements	12V DC, 2A
Power Consumption	Max. 6W
Operating Temperature	0 ~ 50 degrees C
Operating Humidity	20 ~ 80% (non-condensing)
Weight	324g
Dimensions (Φ x H)	194 x 49 mm
Emission	CE, FCC
Connectors	10/100Mbps Ethernet, RJ-45 DC power jack Terminal block for 1 alarm input and 1 output Audio in Audio out Micro SD/SDHC card (max. 32GB, Class 6) Factory default reset button

Ordering Information

ICA-W8500	5 mega-pixel Wireless Fish-Eye IP Camera
-----------	--

Related Products

CV3P-4	4-Channel Cam Viewer 3 Professional
CV3P-8	8-Channel Cam Viewer 3 Professional
CV3P-16	16-Channel Cam Viewer 3 Professional
CV3P-36	36-Channel Cam Viewer 3 Professional
CV3P-64	64-Channel Cam Viewer 3 Professional
CV3-M1024	1024-Channel Central Management Software
ICA-8350	3 mega-pixel Vandalproof Fish-Eye IP Camera
ICA-8500	5 mega-pixel PoE Fish-Eye IP Camera
ICA-W8100	Wireless Cube Fish-Eye IP Camera
ICA-W8100-CLD	Wireless Fish-Eye Cloud IP Camera
NVR-420	4-Ch Network Video Recorder with HDMI
NVR-820	8-CH Network Video Recorder with HDMI
NVR-1620	16-CH Network Video Recorder with HDMI
NVR-3210	32-CH Network Video Recorder
NVR-3250	32-Ch Rack-mount Network Video Recorder
WDAP-C7400	900Mbps Dual Band Ceiling Mount Wireless Access Point

PLANET Technology Corporation

11F., No.96, Minquan Rd., Xindian Dist., New Taipei City
231, Taiwan (R.O.C.)
Tel: 886-2-2219-9518 Fax: 886-2-2219-9528
Email: sales@planet.com.tw www.planet.com.tw



PLANET reserves the right to change specifications without prior notice. All brand names and trademarks are property of their respective owners. Copyright © 2014 PLANET Technology Corp. All rights reserved.

C-ICA-W8500