

# H.265 36-Ch Network Video Recorder with 8-Bay Hard Disks

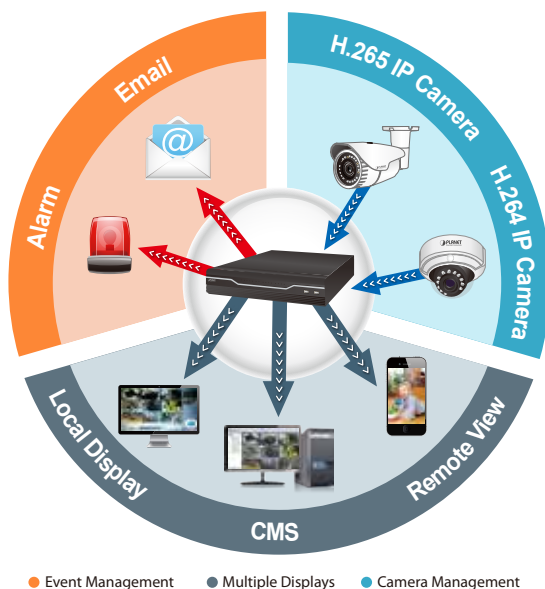


## Ideal Solution to Storing More Videos

PLANET NVR-3685, a new H.265 IP surveillance solution, is designed to work with PLANET H.265/H.264 cameras or ONVIF cameras for chain stores, public places and other security monitoring applications. The NVR-3685 is a Linux-embedded NVR that can connect up to 36 IP cameras and supports 8 hard disks. The unit employs RAID 0/1/5 to optimize the process of securing data easily and quickly.



Besides, the NVR-3685 features dual Gigabit Ethernet ports, eMap, dual local display, e-SATA, and PLANET DDNS. Once the NVR-3685, armed with a complete surveillance equipment, detects any suspicious events, you will be alerted with alarm via email; FTP, HTTP and TCP servers; and more. The NVR-3685 is thus able to further enhance security within the premises to protect your property. Moreover, it is fully compatible with mobile app and Internet Explorer on Windows operating system for multi-platform remote access.



## Hardware

- Linux-embedded, highly-reliable standalone NVR
- Supports dual Gigabit Ethernet ports
- Supports VGA/HDMI dual local display
- Supports 8 SATA HDDs, up to 6TB per HDD
- Supports e-SATA

## Video and Audio

- Simultaneous recording and live view streams
- Up to 36 channels of video recordings
- Supports H.265/H.264 compression
- Video resolution up to 5 megapixels (2560 x 1920)
- Supports throughput up to 300 Mbps
- 2-way audio (G.711, G.726)

## Video Recording and Backup

- Scheduled recording of 36 IP cameras simultaneously
- Samba path supported
- Supports RAID 0/1/5
- Exports recorded video files in the AVI format to USB device or local storage
- Instant event notification and recording

## Network Service

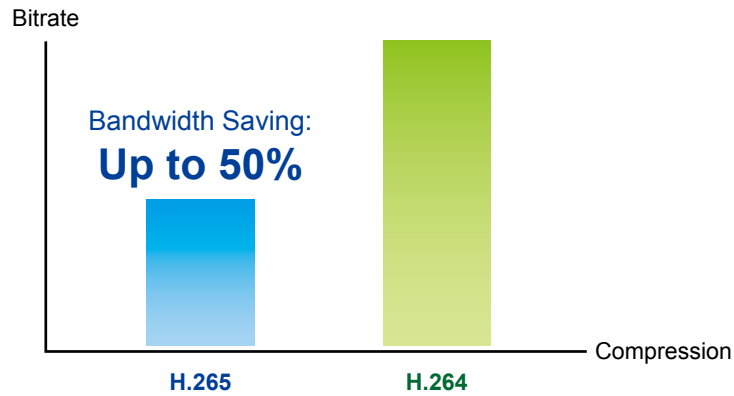
- Easy access with PLANET Dynamic DNS and built-in NTP server
- Supports PPPoE/DHCP/static network connection
- Supports low bit-rate connection for remote access

## Easy Installation and Management

- ONVIF compliant for interoperability
  - Location management with emap
  - Supports multiple languages
  - Auto discovered by management software
  - Web-based and management utility for easy configuration
  - Manages up to 256 channels through central management software
  - Supports USB mouse and joystick (PTZ)\*
  - Supports mobile phone remote view
- \*The remote control and joystick are optional.

*Bandwidth Saving*

With H.265 compression technology and embedded with 8 HDDs design providing up to 48TB, the NVR-3685 offers over 30% more of recording capacity than systems employing H.264 compression. This advance gives users larger storage space for longer durations of video recording.



*Location Management with eMap*

The eMap function helps visualize the layout of IP cameras in the surveillance network enabling you to quickly identify the location of each IP camera, especially when an alarm occurs. Just upload the pictures of the monitoring locations and drag and drop the IP camera icons to the right place on the eMap.



*High-resolution Local Display*

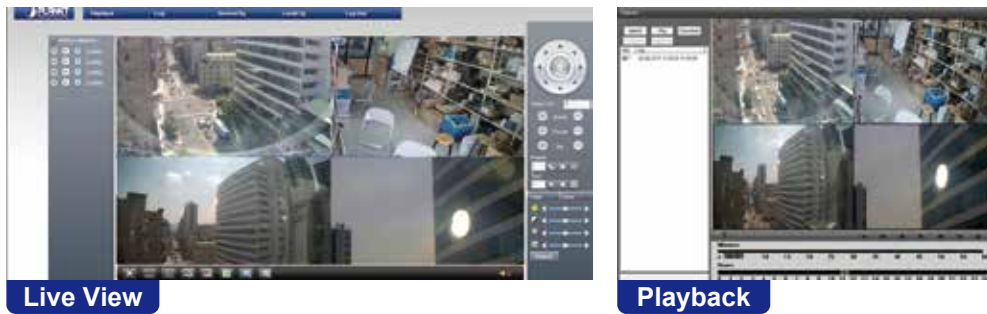
The NVR-3685 comes with HDMI and VGA video output interfaces for dual local display. It can be connected to an HDMI monitor and VGA monitor separately, where live viewing contents or playback contents can be displayed simultaneously. With the dual local display function, users can monitor locally with high flexibility in a different display resolution, thus eliminating the need for a separate PC to view video from the unit. Besides, the NVR also can be operated with the USB mouse to configure and monitor all the system easily.



*Real-time, Remote Monitoring*

You are able to search and install Planet IP cameras via Web interface with more convenience and efficiency. Besides the Web interface, the NVR also supports aCV5 and iCV5 viewer app software for smart phone, so you can connect to the NVR anywhere, anytime.

**Real-time, Remote Monitoring**



*Live View and CMS Administration*

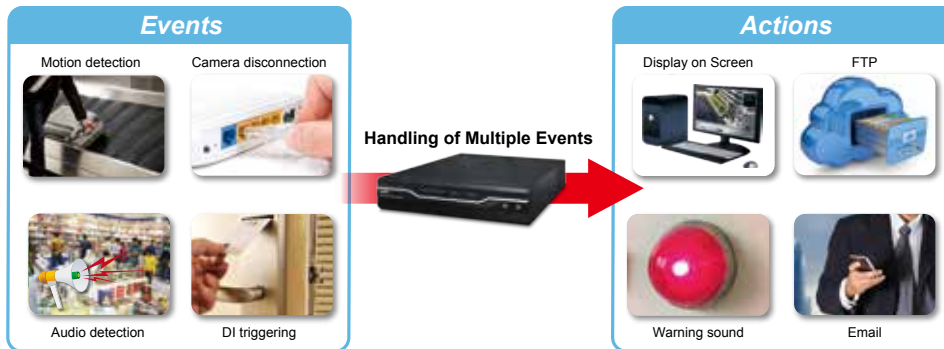
The Central Management System (CMS) of the NVR-3685 can manage up to 256 channels. With low bitrate transmission and unlimited group management, the CMS is able to view a maximum of 64 channels on one page and you may switch between groups to see up to 256 channels of live view or a maximum of 16 channels of playback on one page. The CMS of the NVR-3685 is good for chain stores via Internet, large installations in the LAN environment, or any environment where its control center is utilized to monitor via multiple NVRs.



## Applications

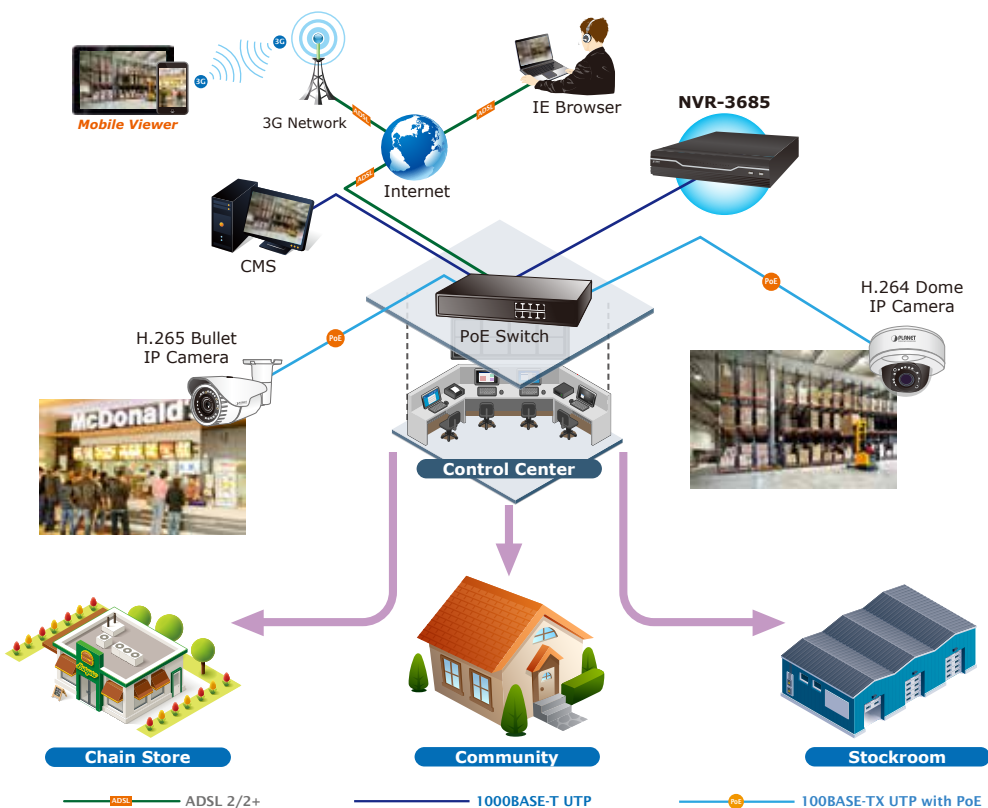
### Advanced Event Management

The NVR-3685 is equipped with multiple event detections like motion, camera disconnection, digital input detection, audio detection, HDD error and scheduled event triggering. All of them are able to send alarm through screen; digital output; buzzer; snapshot; recording; email; and FTP, HTTP and TCP servers. Those alarm notifications provide you with extra protection when such event occurs, so you won't miss any critical information.



### Perfect for Indoor Surveillance Applications

PLANET NVR systems can be controlled and monitored both in the local LAN and the remote site via Internet. Users can also login from their mobile phones to check the monitoring screen anywhere, anytime. It is especially perfect for indoor surveillance in such places as restaurants, retail stores, stockrooms, etc.



## Specifications

Product	NVR-3685
<b>Hardware</b>	
Ethernet	2 x RJ45, 10/100/1000BASE-T
USB Interface	2 x USB 2.0 and 1 x USB 3.0 for backup device and mouse
Video Interface	VGA and HDMI video interfaces
Audio Interface	1 x mic-in (phone jack 3.5mm), 1 x audio-out (phone jack 3.5mm)
Storage Device	8 x 3.5" SATA III hard disk connector, 1 x e-SATA connector
LED	Power, HDD, LAN, REC, Event, Alarm, Camera, DI and DO
Button	Reset
Buzzer	1 x buzzer
DI/DO	4 x digital in, 4 x digital out
<b>Camera</b>	
Max. Channels	Up to 36 IP cameras in H.265 only mode Up to 32 IP cameras in mixed mode
Camera Added	Manual/Auto Search/Auto Setup
<b>Video</b>	
Compression	H.265/H.264
Resolution	5M, 3M, Full HD, SXGA, VGA, QVGA
Max. Live View Frame Rate (Local Display)	Mixed mode: 960fps H.265 only mode: 1080fps
Max. Playback Frame Rate (Local Display)	Mixed mode: 960fps H.265 only mode: 1080fps
Max. Live View Frame Rate (Remote)	Mixed mode: 960fps H.265 only mode: 1080fps
Max. Playback Frame Rate (Remote)	480fps
Max. Throughput	300Mbps
Snapshot	<ul style="list-style-type: none"> <li>– Preview snapshots in HDD or removable device</li> <li>– Search event snapshots</li> <li>– Back up to removable device</li> </ul>
<b>Audio</b>	
Audio Type	2-way
Audio Format	G.711, G.726
<b>Live View</b>	
Display Mode	Live View, Playback, Full Screen
Split Screen	1, 4, 9, 16, 25, 32, 36 (H.265 mode), Full Screen
Full Screen	1/4/9/16/25/32/36
PTZ Support	Preset, tour, auto pan, iris, focus, speed and joystick
<b>Playback</b>	
Split Screen	1, 4, 9, 16, 25, 32, 36 (H.265 mode), Full Screen
Search Mode	Simple, graphic, event
Play Method	Play, Reverse, Pause, Seek, Pre I-frame, Next Frame Search by time or event
<b>Record</b>	
Recording Mode	<ul style="list-style-type: none"> <li>– Scheduled recording of each camera</li> <li>– Round the clock, motion record mode, DI detection, event triggering</li> <li>– Pre-alarm/Post-alarm configuration</li> <li>– Auto recycle</li> </ul>
<b>Monitor</b>	
Dual Monitor	Displays the same contents, depending on max. channels
Monitor Resolutions	1920 x 1080, 1440 x 900, 1280 x 1024, 1024 x 768
<b>Network and Configuration</b>	
Network Service	Fixes IP/DHCP/PPPOE/DIPS Report/UPNP/DDNS/DHCP Server
Notification	SMTP/HTTP/FTP/TCP
<b>Triggers and Event</b>	
Event Type	<ul style="list-style-type: none"> <li>– Motion</li> <li>– Disconnection</li> <li>– Digital Input</li> <li>– Scheduled Triggering</li> <li>– HDD Error</li> <li>– Schedule-able Event Detection</li> </ul>

Event Action	<ul style="list-style-type: none"> <li>- Display on Screen</li> <li>- DO</li> <li>- Buzzer Alarm</li> <li>- Snapshot</li> <li>- Recording</li> <li>- Mail</li> <li>- FTP</li> <li>- TCP</li> <li>- HTTP</li> </ul>
<b>Management</b>	
Number of Groups	2 (Administrator and User )
Privileges	Live View, Playback, Record, Setting, PTZ, Two-way Audio
User Interface	<ul style="list-style-type: none"> <li>- Graphic local user interface (operated by mouse)</li> <li>- Web browser (Internet Explorer 7 or above)</li> <li>- CMS utility</li> </ul>
Log Type	System/event/bit-rate
Software Utility	Search utility, mobile app, CMS
Language	English, Traditional Chinese, German, Greek, Thai
<b>Environment</b>	
Power	115/230 AC, 50/60Hz, 8A (max.)
Consumption	350W
Operating Temperature	0~40 degrees C
Storage Temperature	-40~70 degrees C
Humidity	0~85% (non-condensing)
Weight	6.06 kg
Dimensions (W x D x H)	435 x 417 x 98 mm

## Ordering Information

NVR-3685	H.265 36-Ch Network Video Recorder with 8-Bay Hard Disks
----------	--

## Related Products

ICA-MH3350P	H.265 3 Mega-pixel Bullet IR IP Camera with Remote Focus and Zoom
ICA-MH4300P	H.265 3 Mega-pixel IR IP Camera with Remote Focus and Zoom
ICA-MH5350P	H.265 3 Mega-pixel Vandalproof IR IP Camera with Remote Focus and Zoom
NVR-915	9-Ch Network Video Recorder
NVR-1615	16-Ch Network Video Recorder
NVR-820	8-Ch Network Video Recorder with HDMI
NVR-1620	16-Ch Network Video Recorder with HDMI
NVR-E6480	64-Ch Windows-based Network Video Recorder with 8-Bay Hard Disks
HDVR-430	4-Ch Hybrid Digital Video Recorder
HDVR-830	8-Ch Hybrid Digital Video Recorder
HDVR-1630	16-Ch Hybrid Digital Video Recorder
FGSW-2622VHP	24-Port 10/100TX 802.3at PoE + 2-Port Gigabit TP/SFP Combo Ethernet Switch with PoE LCD Monitor (300W)