

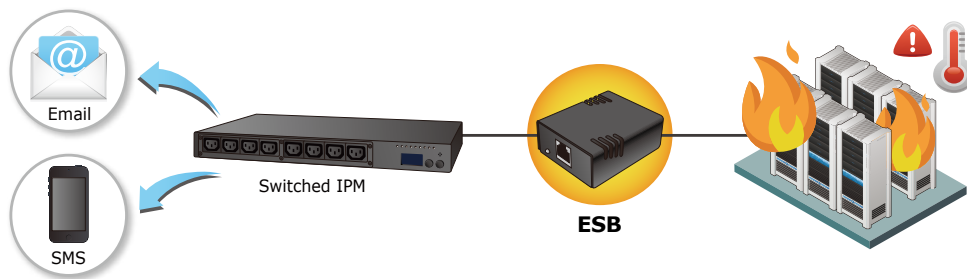
Environmental Sensor Box



Connecting with Switched IP Power Manager (IPM)

The ESB (Environmental Sensor Box) is a monitoring device that allows you to remotely monitor the temperature, humidity. PLANET Switched IP Power Manager (IPM) is equipped with a console port for connecting to an environmental sensor box (ESB). Temperature and humidity sensors may be added to control the power switch by monitoring the environmental changes. When the temperature and humidity reach the customizable minimum/maximum thresholds set, you will be notified via SMS and e-mail.

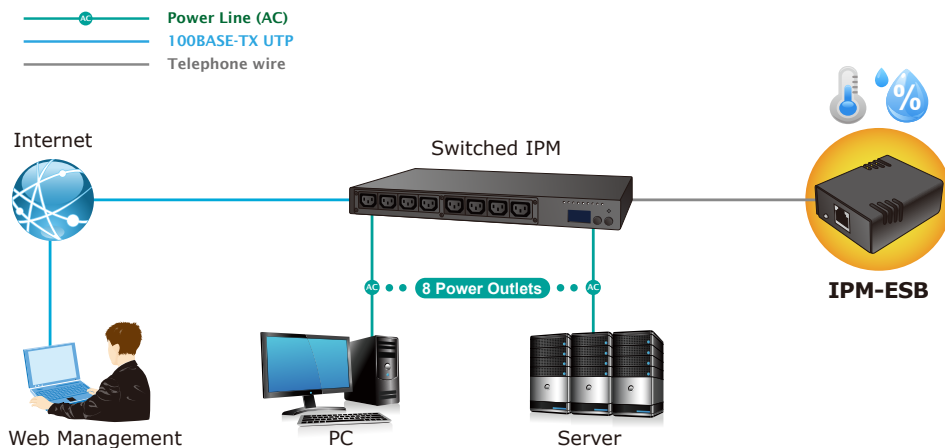
- Measurement range: 0 – 40°C (temperature); 0 – 95% RH (humidity)
- Measurement accuracy: +/- 0.1°C (temperature); +/- 2% RH (humidity)
- Off-line monitor
- Naming support for ESB port
- Connect to Switched IPM over RJ11 cable
- User selectable alarm thresholds allow you to define acceptable temperature or humidity limits
- Comprehensive environmental management and flexible configuration via Web browser
- Automatic events notification via E-mail and SNMP trap
- Regularly records ESB parameters for statistic analysis and event diagnostics
- Quick and easy installation (hot-swappable)



Applications

Remote Management via Network

PLANET Switched IP Power Manager consolidates power control, current monitoring, temperature and humidity monitoring with environmental sensor box (IPM-ESB), web page management, message, e-mail, and SNMP functions together to enable MIS staff to be informed and thereby to remotely deal with the relevant problems through Internet.



Specifications

Product	IPM-ESB
Hardware Specifications	
Sensor Port	1 x RJ11 type, 6P
LED	1 x Power/Status LED
Housing	Plastic
Dimensions (W x D x H)	57 x 47.5 x 26.5 mm
Weight	43g
Cable Length	1.4 meters
Measurement	
Range	Temperature: 0 - 40°C Humidity: 0– 95% RH
Accuracy	Temperature: +/- 0.1°C Humidity: +/- 2 % RH
Response Time	2 seconds
Environments	
Operating Temperature	0 ~ 40 degrees C
Operating Humidity	0 ~ 95%

Ordering Information

IPM-ESB	Environmental Sensor Box
---------	--------------------------

Related Products

IPM-4220	IP-based 4-port Switched Power Manager (AC 100-240V, 16A max.)
IPM-8220	IP-based 8-port Switched Power Manager (AC 100-240V, 16A max.)