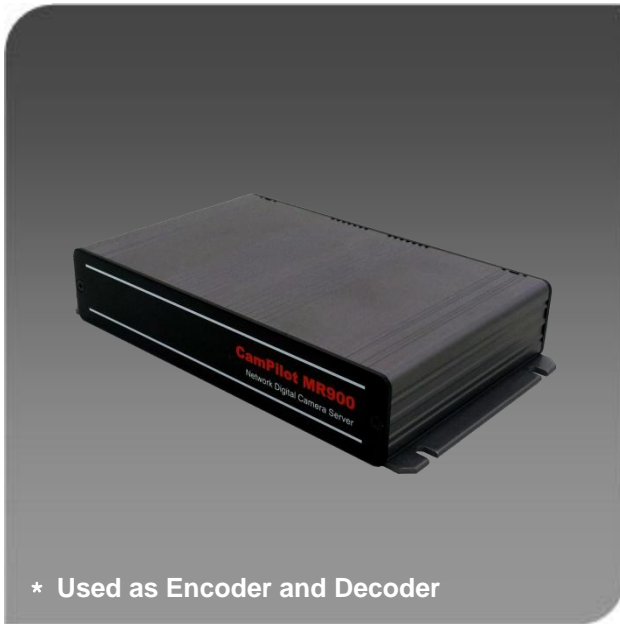


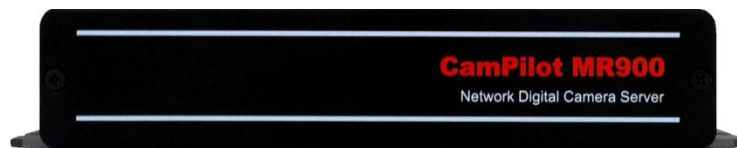
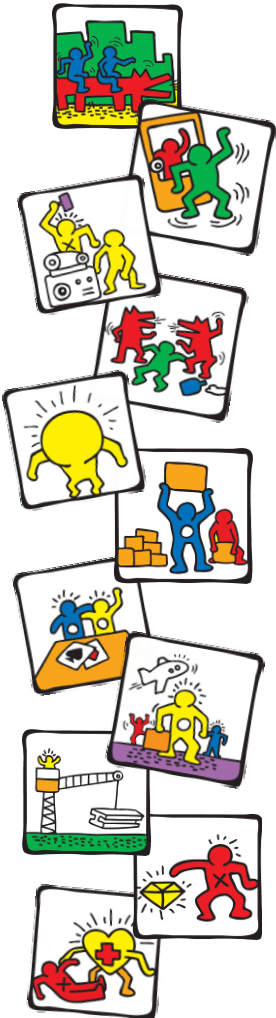


CamPilot MR900

1Ch. Network Video Server



- 1ch H.264 Video Encoder / Decoder
- NTSC / PAL support
- D1 resolution at 30FPS
- Multi-codec support
 - H.264 / MJPEG
- Multi-stream with variable resolution & frame
 - 1st stream : H.264 or MJPEG @ all resolutions
 - 2nd stream : H.264 or MJPEG @ all resolutions
- Stream based motion detection
- VBR / CBR support
- Two-way audio supported (Full Duplex)
- Multi-codec audio support
 - G.711 / G.726
- RS-485 for external device control
- 1ch Digital Input / Output
- DC 12V, 1A



Front



Rear



- | | |
|-------------------------------------|--------------------------------------|
| ① Reset (Factory Default Switch) | ⑦ Ethernet (10/100 Base-T LAN) |
| ② DIO (Digital Input/Output), RS485 | ⑧ Power LED |
| ③ Audio IN (Ø3.5 - Stereo) | ⑨ Power Input (Ø5.5x2.1 - DC12V, 1A) |
| ④ Audio OUT (Ø3.5 - Stereo) | |
| ⑤ Video IN (BNC) | |
| ⑥ Video OUT (BNC) | |
| - Encoder mode : loop-through | |
| - Decoder mode : CVBS decoding out | |



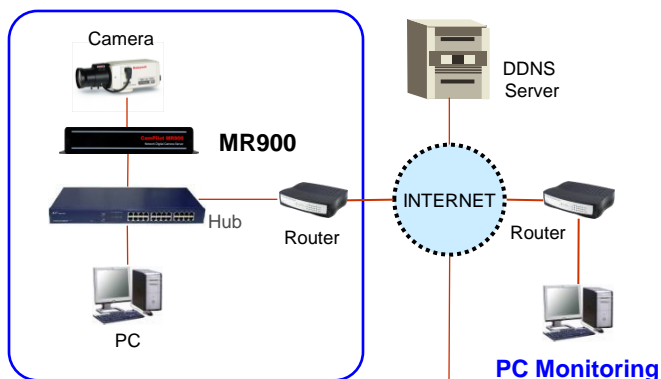


PRODUCT SPECIFICATION

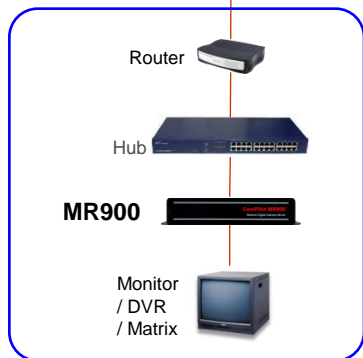
CamPilot MR900

Items		Specifications
Video Compression	Compression Type	H.264(MPEG4 AVC) Baseline@L3.0 / MJPEG
	Resolutions	D1 / 4CIF / VGA / CIF / QVGA / QCIF
	Bitrate	32Kbps ~ 6Mbps
	Frame Rate	30/25 (NTSC/PAL) fps @ all resolutions
	Streaming	H.264 Dual Stream or Simultaneous H.264 and MJPEG
Audio Streaming	Bi-Directional Audio	Two way , full duplex (Stereo)
	Audio Input Compression	G.711 / G.726
	Audio Line Input	Line level input. Nominal 0-dB input level is 1.0 VRMS. Gain of -34.5 dB to 12 dB.
	Audio Output Compression	G.711 / G.726
External I/O	Audio Line Output	Line level output. Nominal output level 1.0 VRMS.
	Alarm Input (Digital Input)	1Ch. (Dry Contact N.O. / N.C.)
	Alarm Output (Digital Output)	1Ch. (Relay Switching - Nominal Voltage 5VDC, 1A)
	Factory Default Button	Restore to default setting (Network, Password and etc)
	RS485	1Ch. for External Device Control like a PTZ driver
Network	Video Out Select	Encoder : Analog Video Loop Though, Decoder : CVBS decoding Video Out
	Power LED	Power Good Indicator
	Ethernet	Ethernet(10/100 Based-T), RJ-45 Connector
Software	Protocol	TCP, IP, HTTP, DHCP, FTP, DNS, DDNS, NTP, ICMP, SNMP, SMTPE, UPnP, RTP, RTSP
	Web Browser	IE 8.0 or above
	SDK	Cellinx SDK 4.0
Operating	Security	MD5 Password / iptables (firewall)
	Temperature	0°C ~ 40°C / 32°F ~ 104°F
Power	Power Requirement	DC 12V / 1.0A
	Power Consumption	300mA (Nominal)
Physical	Dimensions	169(W) x 117(D) x 31(H) mm
	Weight	345g
Case	Material	Aluminum

CONFIGURATION EXAMPLE



Encoder mode



Decoder mode

DIMENSIONS (mm)

